

4 LEFT SIDE ELEVATION
SCALE = 1/8" = 1'-0"

EXTERIOR MOTION SENSOR SYSTEM:
CONSISTING OF:
ONE HORN LOCATED ON THE BACK SIDE OF THE FRONT PARAPET AS SHOWN ON REAR ELEVATION.
TWO STROBES LOCATED AT OPPOSITE CORNERS OF THE BUILDING JUST BELOW THE PARAPET CAP AS SHOWN ON THE FRONT & REAR ELEVATIONS.
FOUR MOTION SENSORS, ONE SENSOR LOCATED ON EACH SIDE OF THE BUILDING 40' FROM THE REAR WALL. TWO SENSORS ON THE REAR OF THE BUILDING AT THE FIRST AND THIRD QUARTER POINTS AS SHOWN.
SEE MEP DRAWINGS FOR ADDITIONAL INFORMATION.

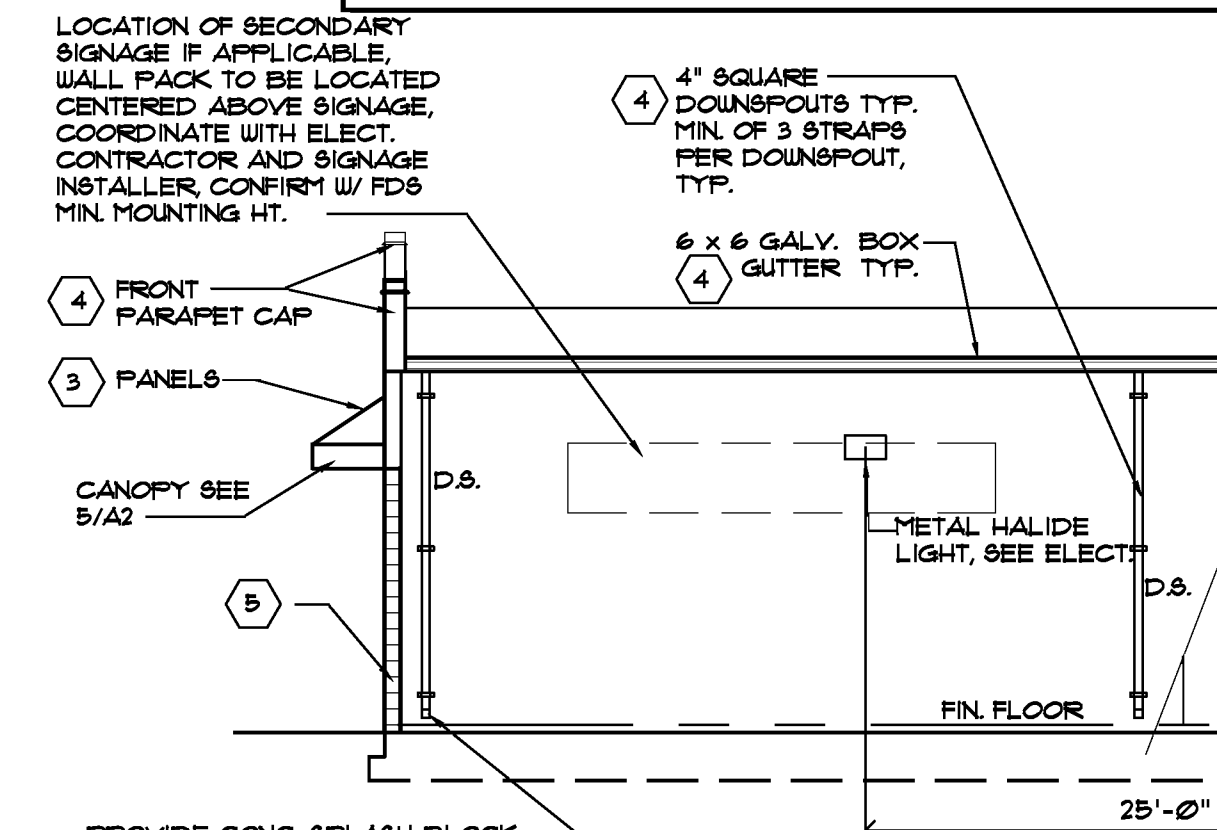
METAL PANEL NOTES:
1. THIS SYSTEM USES R-PANEL SCREW DOWN ROOF OR STANDING BEAM ROOF SYSTEM. CONSULT FAMILY DOLLAR PROJECT MANAGER FOR WARRANTY REQUIRED PER PROJECT.
2. THE PANELS FOR THE SIDE AND REAR ARE ATTACHED W/ TAMPER RESISTANT SCREWS. SCREWS TO BE PAN HEAD WITH SELF SEAL WASHER.
3. THE FRONT WALL ABOVE THE CMU IS TO BE ATTACHED W/ TAMPER RESISTANT SCREWS. SCREWS TO BE PAN HEAD WITH SELF SEAL WASHER.
4. METAL BUILDING EAVE HT. TO BE ADJUSTED AS REQUIRED TO MAINTAIN FAMILY DOLLAR STANDARD CEILING HEIGHT.
G.C. TO USE TAMPER RESISTANT SCREWS FOR ALL METAL PANELS. SCREW MUST BE FULL HEIGHT PAN HEAD SELF-DRILLING STAINLESS STEEL SCREWS W/ SELF SEAL WASHERS OR EQUAL.
VERIFY W/ SPECIFIC METAL BLDG. CO.

NOTE: FRIEGHT DOOR MUST BE SHIELDED OVERHEAD FROM THE WEATHER. IF THE PROTOTYPE CANOPY IS NOT USED, AN AWNING, VESTIBULE OR OTHER FORM OF PROTECTION MUST BE USED. FINAL APPROVAL FROM FAMILY DOLLAR STORES.

DOWNSPOUT NOTE:
DOWNSPOUT SPACING TO BE DETERMINED BY CIVIL ENGINEER, BASED ON LOCAL TYPICAL AND MAXIMUM RAINFALL AMOUNTS, WITH DOWNSPOUTS PLACED EQUALLY APART TYP. NO DOWNSPOUT MAY BE PLACED WITHIN 12" OF A DOOR FRAME. USE A MINIMUM OF THREE STRAPS PER DOWNSPOUT, TYPICAL.

GENERAL EXTERIOR NOTE:
PROVIDE SLEEVE, BOOT, OR OTHER APPROPRIATE PENETRATION MATERIAL FOR A CLEAN TRANSITION FROM EXTERIOR TO INTERIOR FOR ALL CONDUIT, WIRE, PIPE ETC. OWNER MUST APPROVE METHOD AND FINISH BEFORE BUILDING COMPLETION.

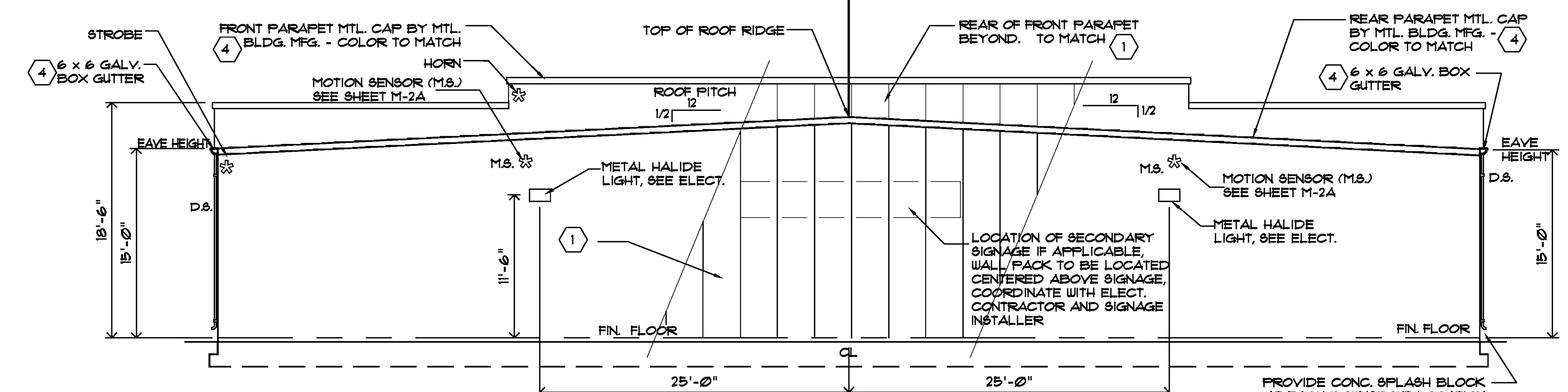
EAVE HEIGHTS
1- WOOD FRAME BUILDINGS SHALL HAVE AN EAVE HEIGHT OF 15'-0"
2- METAL FRAME BUILDINGS SHALL HAVE AN EAVE HEIGHT OF 15'-0"



2 RIGHT SIDE ELEVATION
SCALE = 1/8" = 1'-0"

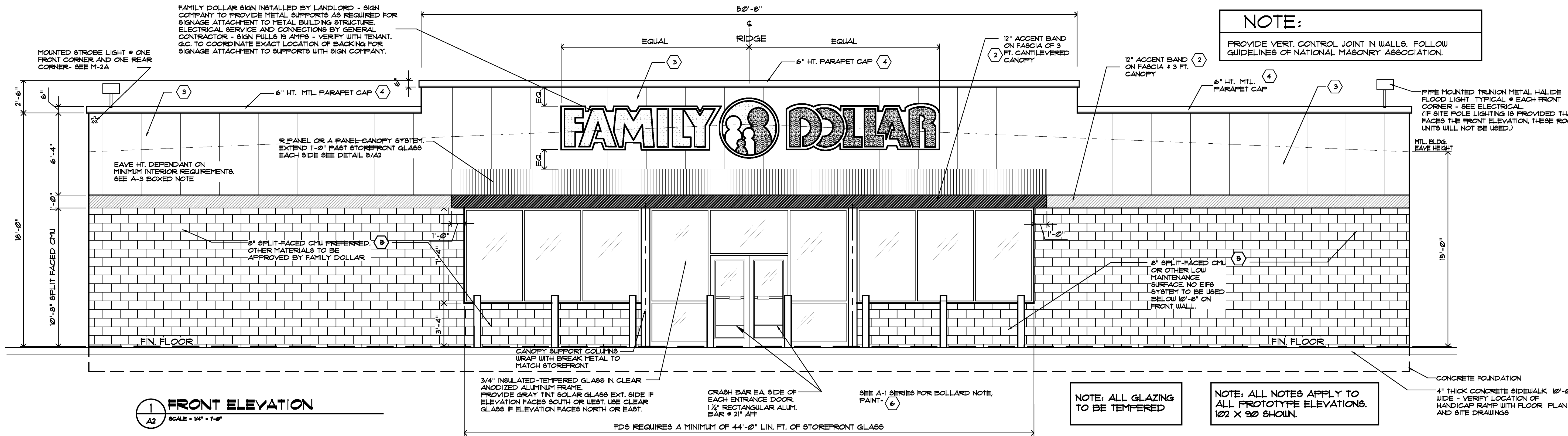
5 CANOPY DTL.
SCALE = 1/2" = 1'-0"

G.C. TO PROVIDE KEY BOX FOR LOCK ACCESS DURING PUNCHOUT AND TURNOVER



3 REAR ELEVATION
SCALE = 1/8" = 1'-0"

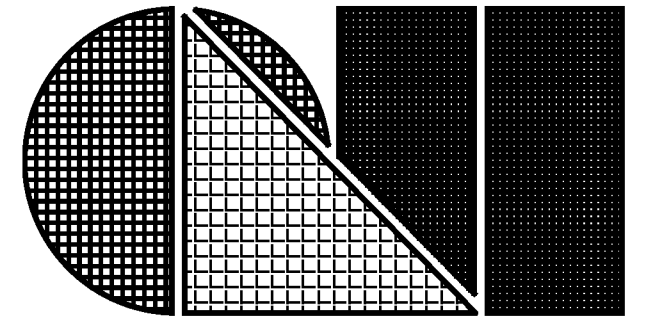
NOTE: STOREFRONT DOORS MUST BE SHIELDED OVERHEAD FROM THE WEATHER. IF THE PROTOTYPE CANOPY IS NOT USED, AN AWNING OR OTHER FORM OF PROTECTION MUST BE USED. FINAL APPROVAL FROM FAMILY DOLLAR STORES.



1 FRONT ELEVATION
SCALE = 1/8" = 1'-0"

EXTERIOR FINISH SCHEDULE				MATERIALS ARE TO BE APPROVED BY FAMILY DOLLAR STORE. COLORS ARE CRITICAL AND MUST BE APPROVED BY FAMILY DOLLAR STORE REPRESENTATIVE IF THEY DIFFER FROM THE SHERWIN WILLIAMS COLORS SHOWN BELOW.
NO.	AREA	TYPE	COATS	COLOR
1	METAL WALL PANELS	VP - VEE RIB PANEL NUCOR - ACCENT PANEL	PRE-FINISHED	VP COLOR "TAN" NUCOR COLOR "SAGEBRUSH TAN" SHERWIN WILLIAMS MATCHING COLOR SW 6122 "CAMELBACK"
2	METAL CANOPY ROOF 10'-8" TO 11'-8" FASCIA BAND (FRONT ELEV)	VP - PANEL RIB NUCOR - CLASSIC WALL FLAT FACIA MATERIAL	PRE-FINISHED	MATCH VP COLOR "PATRIOT RED" OR SHERWIN WILLIAMS SW 4081 "SAFETY RED"
3	METAL WALL PANELS	VP - VEE RIB PANEL NUCOR - ACCENT PANEL	PRE-FINISHED	VP COLOR "EGYPTIAN WHITE" NUCOR COLOR "LIGHTSTONE" SHERWIN WILLIAMS MATCHING COLOR SW 6148 "WOOL SKEIN"
3A	SOFFIT PANELS	VP - PANEL RIB NUCOR - CLASSIC WALL	PRE-FINISHED	VP COLOR "ARCTIC WHITE" NUCOR COLOR "POLAR WHITE" SHERWIN WILLIAMS MATCHING COLOR SW 6148 "WOOL SKEIN"
4	DOORS, GUTTERS, MTL. TRIM & PARAPET CAP	METAL BUILDING MANUFACTURER	PRE-FINISHED	NUCOR COLOR "SAGEBRUSH TAN" SHERWIN WILLIAMS MATCHING COLOR SW 6122 "CAMELBACK"
5	SPLIT FACED CMU	EXTERIOR LATEX	2	SHERWIN WILLIAMS MATCHING COLOR SW 6122 "CAMELBACK"
6	STEEL BOLLARDS	EXTERIOR LATEX	2	MATCH SHERWIN WILLIAMS SW 4081 "SAFETY RED"
7	METAL ROOF	TO BE DETERMINED	PRE-FINISHED	GALVALUME

EXTERIOR FINISH NOTES:
1. APPLY MASONRY BLOCK FILLER TO CONCRETE BLOCK PRIOR TO FINISH PAINTING.
2. IF METAL BUILDING IS USED, G.C. TO SUBMIT MANUFACTURER'S STANDARD COLORS TO FAMILY DOLLAR FOR APPROVAL.
3. G.C. OR PAINT CONTRACTOR MUST NOTIFY LOCAL SHERWIN WILLIAMS DEALER THAT PAINT IS BEING PURCHASED FOR A FAMILY DOLLAR STORE AND PROVIDE SHERWIN WILLIAMS DEALER WITH STORE LOCATION.



C.L. Helt, Architect Inc.
1136 Greenwood Cliff
Charlotte, NC 28204
Ph. 704-342-1686
Fx. 704-343-0054
E-MAIL CHELHETL@CLHETL.COM

ARCHITECT'S PROJECT # 11-001

FAMILY DOLLAR STORE
9180, 8320, OR 8000 SF PROTOTYPES
CITY, STATE
PLAN # 2011-01
NOT FOR CONSTRUCTION

ELEVATIONS & EXTERIOR FINISH SCHEDULE

THIS SET OF PROTOTYPE DRAWINGS IS FOR REFERENCE ONLY. THIS SET MAY BE PART OF A LEASE PACKAGE OR GENERAL REVIEW BY POTENTIAL BUILDERS OF A FAMILY DOLLAR STORE. IT IS THE DEVELOPER/ LANDLORD/ G.C.'S RESPONSIBILITY THAT WHOEVER IS SEALING THESE DOCUMENTS FOR PERMIT USE HAS COMPLIED WITH FEDERAL/ STATE AND LOCAL CODES AND ORDINANCES, AND REVISED THESE DOCUMENTS ACCORDINGLY FOR THE SITE SPECIFIC STORE. THESE DRAWINGS ARE NOT TO BE SUBMITTED FOR PLAN REVIEW OR PERMITTING.

Drawn By :
D. MYERS

Checked By :
CHET HELT

Revisions :

(Future Seal)
THIS DRAWING AND ITS COPIES ARE THE COPYRIGHT OF THE ARCHITECT. THEY MAY NOT BE USED FOR PROJECTS OTHER THAN THE DESIGNATED PROJECT WITHOUT THE SPECIFIC WRITTEN APPROVAL OF C. L. HELT ARCHITECT INC. AND OR CHET L. HELT, ARCHITECT

Date : 01-01-11

Sheet No. A-2 of 5