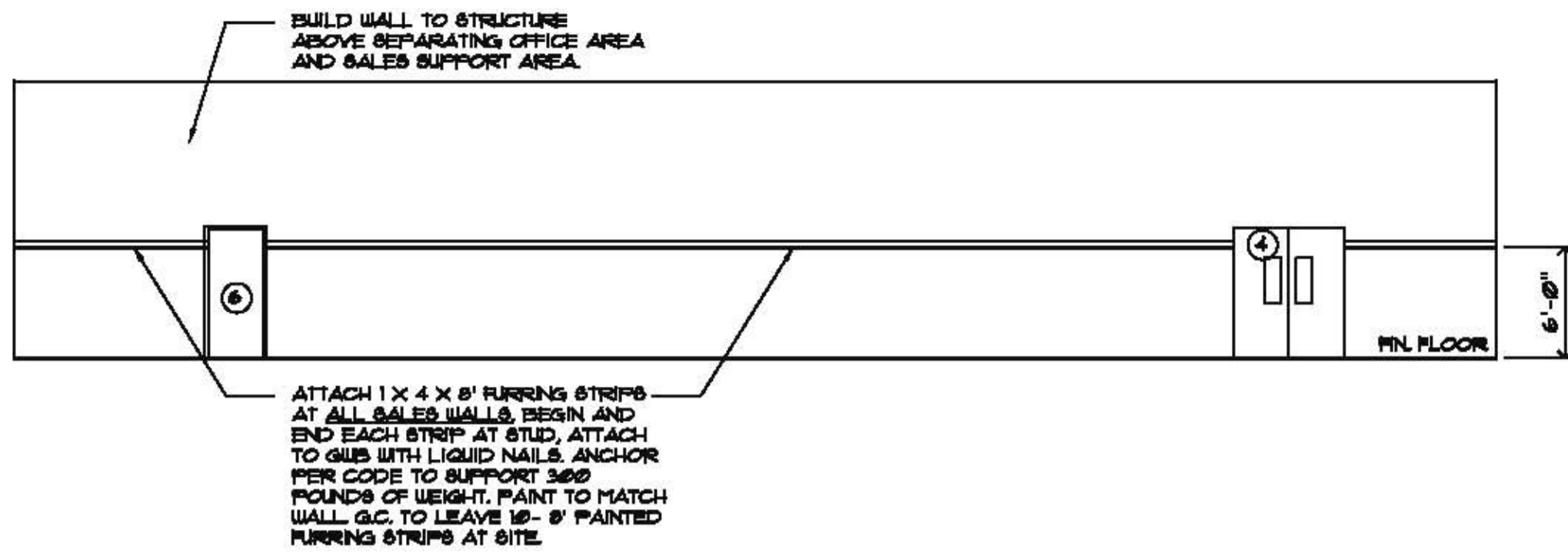
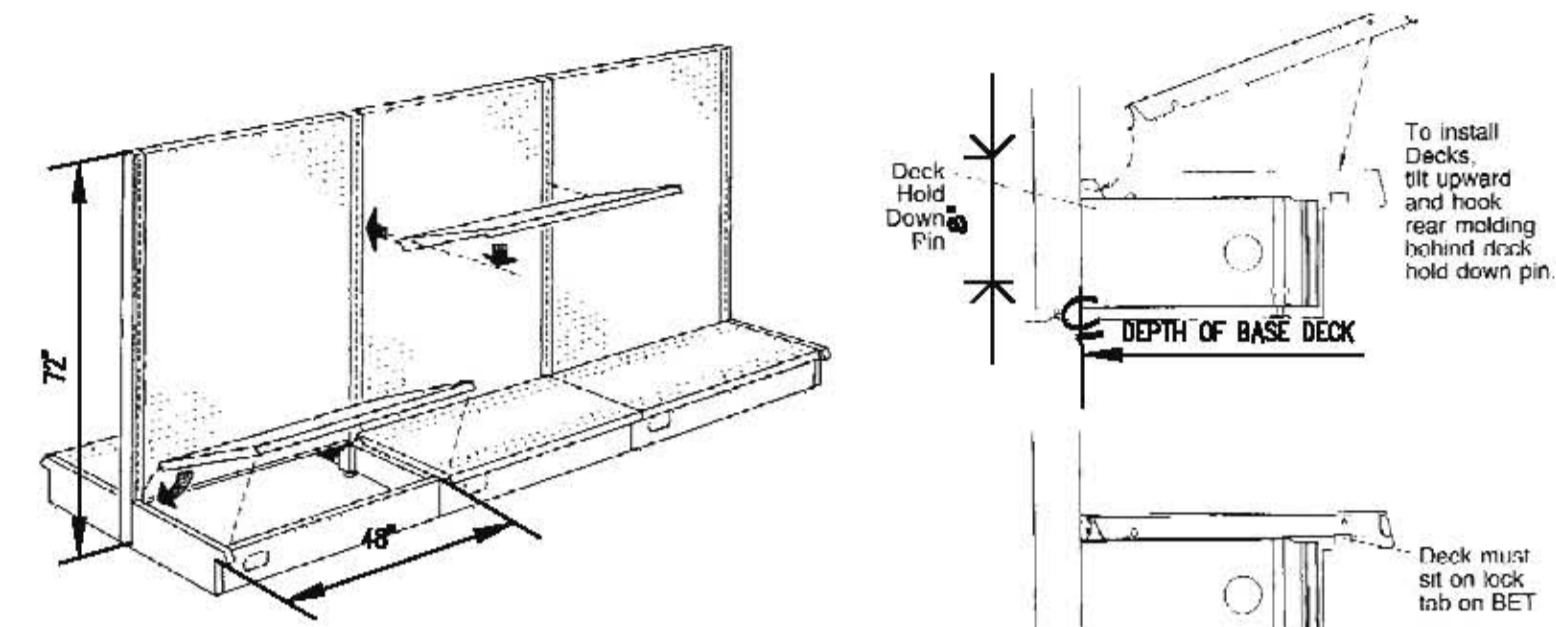


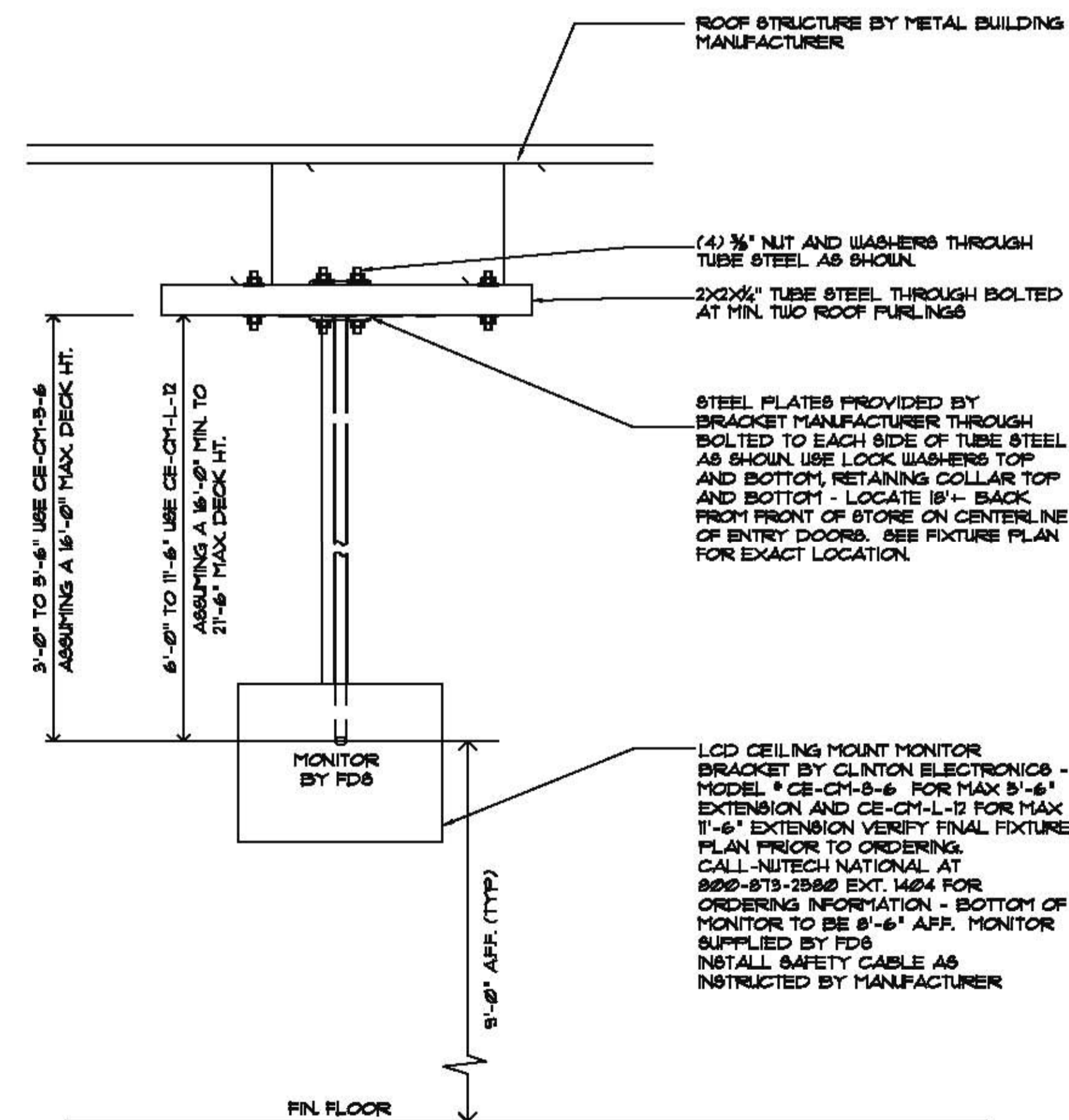
**1 STOREFRONT**  
A-4 1/4" = 1'-0"



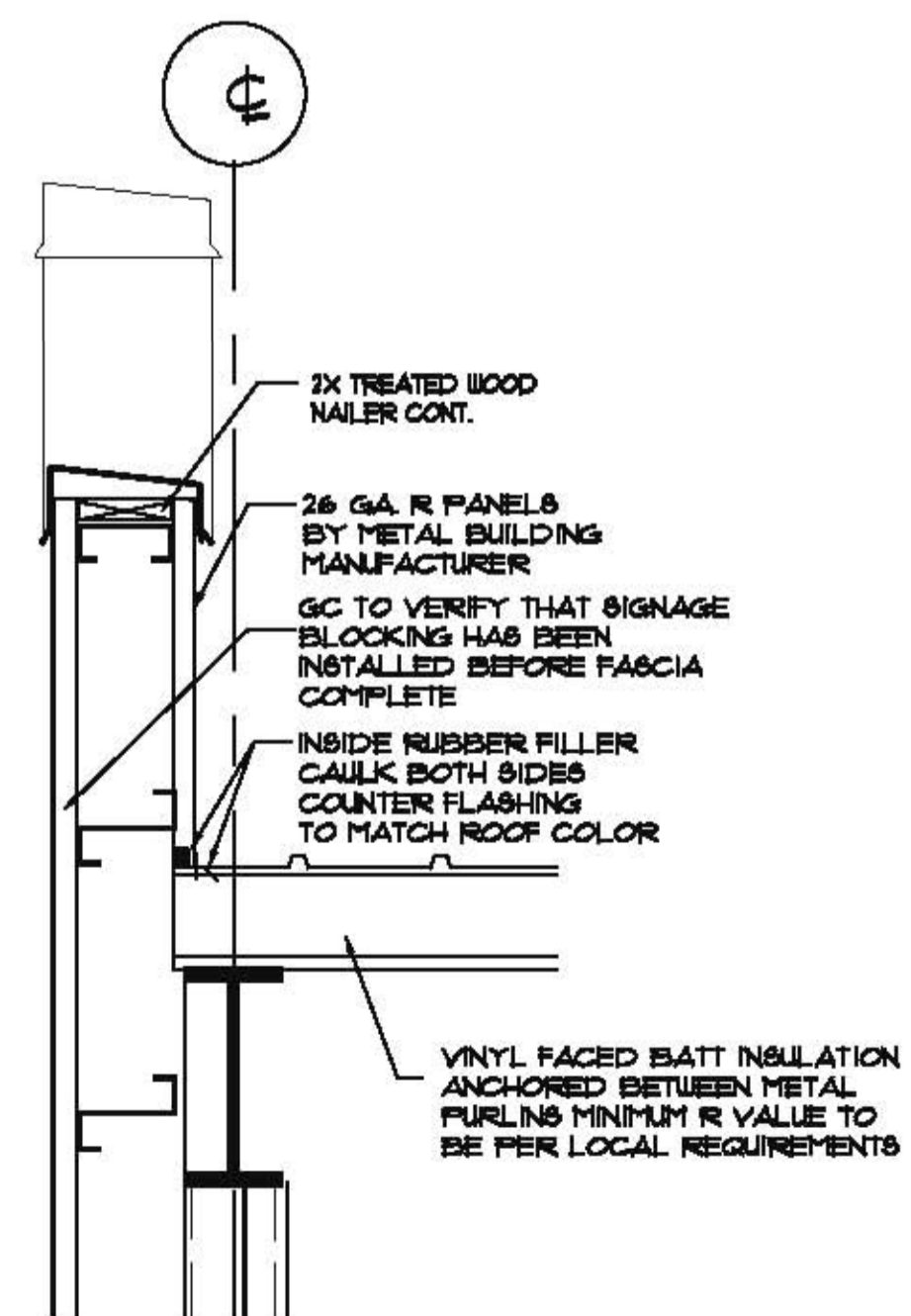
**2 SALES AREA FURRING DETAIL**  
A-4 1/4" = 1'-0"



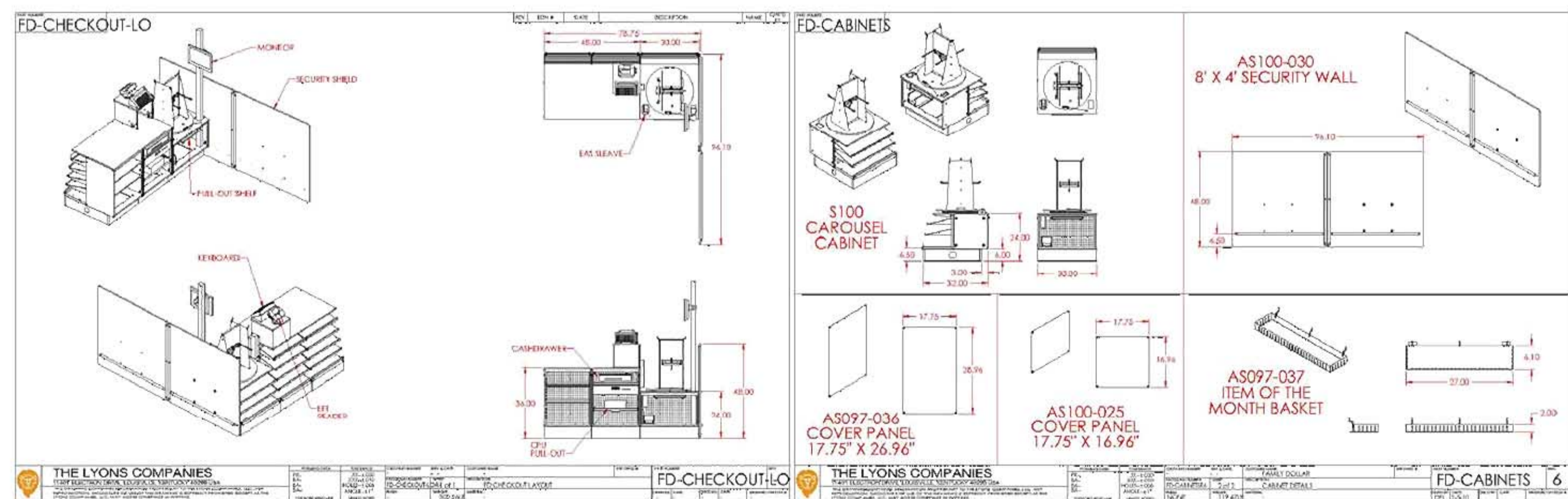
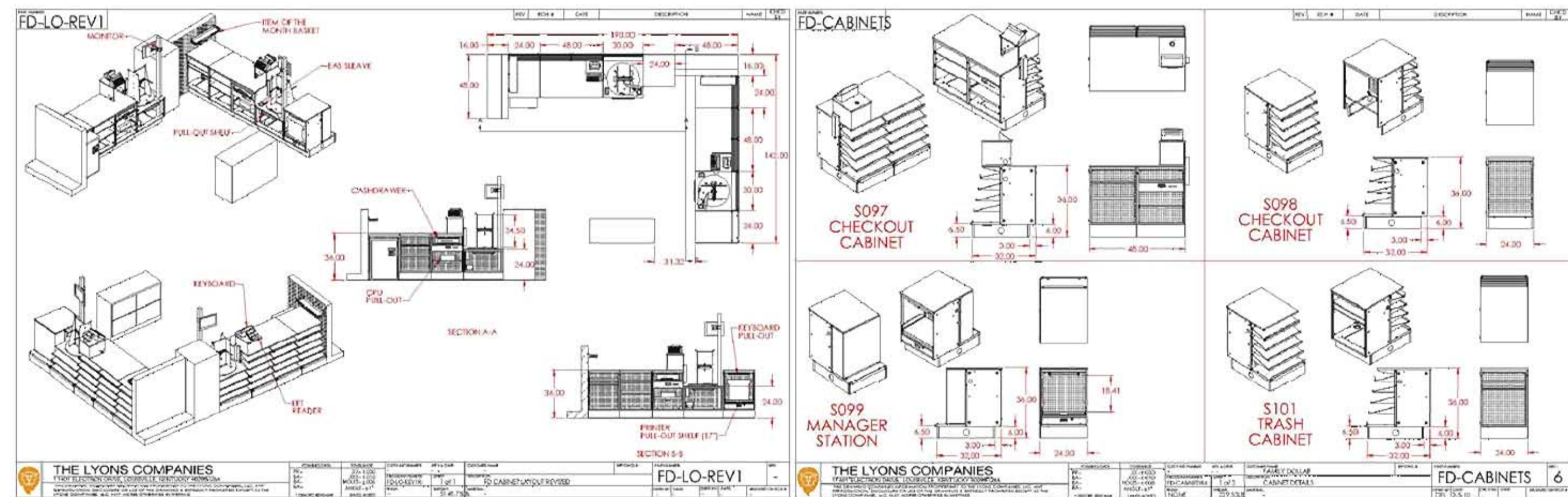
**3 GONDOLA SHELVING DETAIL**  
A-4 NTA



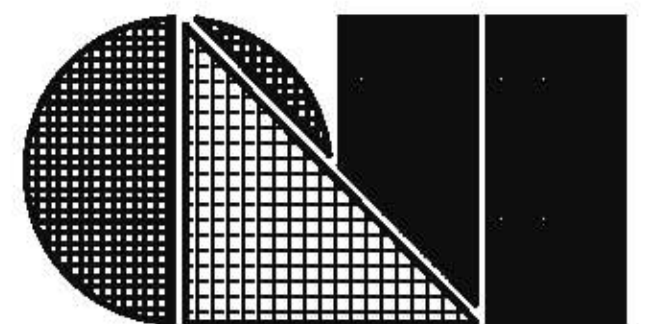
**4 MONITOR DETAILS**  
A-4 1/8" = 1'-0"



**5 ROOF & PARAPET**  
A-4 1/4" = 1'-0"



**6 CHECK OUT DETAILS**  
A-4 NOT TO SCALE



**C.L. Helt, Architect Inc.**  
1136 Greenwood Cliff  
Charlotte, NC 28204

Ph. 704-342-1686  
Fx. 704-343-0054  
E-MAIL CHELTEL @ CLHEL.COM

ARCHITECT'S PROJECT # 11-001

**Project #**  
**FAMILY DOLLAR STORE**  
**9180, 8320, OR 8000 SF PROTOTYPES**  
**CITY, STATE**  
**PLAN # 2011-01**  
**NOT FOR CONSTRUCTION**

**Sheet Description #**  
**DETAILS AND NOTES**

THIS SET OF PROTOTYPE DRAWINGS IS FOR REFERENCE ONLY. THIS SET MAY BE PART OF A LEASE PACKAGE OR GENERAL REVIEW BY POTENTIAL BUILDERS OF A FAMILY DOLLAR STORE. IT IS THE DEVELOPER/ LANDLORD/ G.C.'S RESPONSIBILITY THAT WHOEVER IS SEALING THESE DOCUMENTS FOR PERMIT USE HAS COMPLIED WITH FEDERAL/ STATE AND LOCAL CODES AND ORDINANCES, AND REVISED THESE DOCUMENTS ACCORDINGLY FOR THE SITE SPECIFIC STORE. THESE DRAWINGS ARE NOT TO BE SUBMITTED FOR PLAN REVIEW OR PERMITTING.

**Drawn By :**  
**D. MYERS**

**Checked By :**  
**CHET HELT**

**Revisions :**

**(Future Seal)**  
THIS DRAWING AND ITS COPIES ARE THE PROPERTY OF THE ARCHITECT. THEY MAY NOT BE USED FOR PROJECTS OTHER THAN THE DESIGNATED PROJECT WITHOUT THE WRITTEN APPROVAL OF C. L. HELT ARCHITECT INC. AND OR CHET L. HELT, ARCHITECT

**Date :**  
**01-01-11**

**Sheet No.**  
**A-4**  
**of 5**