

C.L. Helt, Architect Inc.
 1136 Greenwood Cliff
 Charlotte, NC 28204

Ph. 704-342-1686
 Fx. 704-343-0054
 E-MAIL CHHELTH@CLHELT.COM

ARCHITECT'S PROJECT # 11-001

Project #
FAMILY DOLLAR STORE
 9180, 8320, OR 8000 SF PROTOTYPES
CITY, STATE
PLAN # 2011-01
NOT FOR CONSTRUCTION

Sheet Description #
104 X 80
MEP PLANS
SCALE 3/32" = 1'-0"

THIS SET OF PROTOTYPE DRAWINGS IS FOR REFERENCE ONLY. THIS SET MAY BE PART OF A LEASE PACKAGE OR GENERAL REVIEW BY POTENTIAL BUILDERS OF A FAMILY DOLLAR STORE. IT IS THE DEVELOPER/ LANDLORD/ G.C.'S RESPONSIBILITY THAT WHOMEVER IS SEALING THESE DOCUMENTS FOR PERMIT USE HAS COMPLIED WITH FEDERAL/ STATE AND LOCAL CODES AND ORDINANCES, AND REVISED THESE DOCUMENTS ACCORDINGLY FOR THE SITE SPECIFIC STORE. THESE DRAWINGS ARE NOT TO BE SUBMITTED FOR PLAN REVIEW OR PERMITTING.

Drawn By :
 C. THOMASON

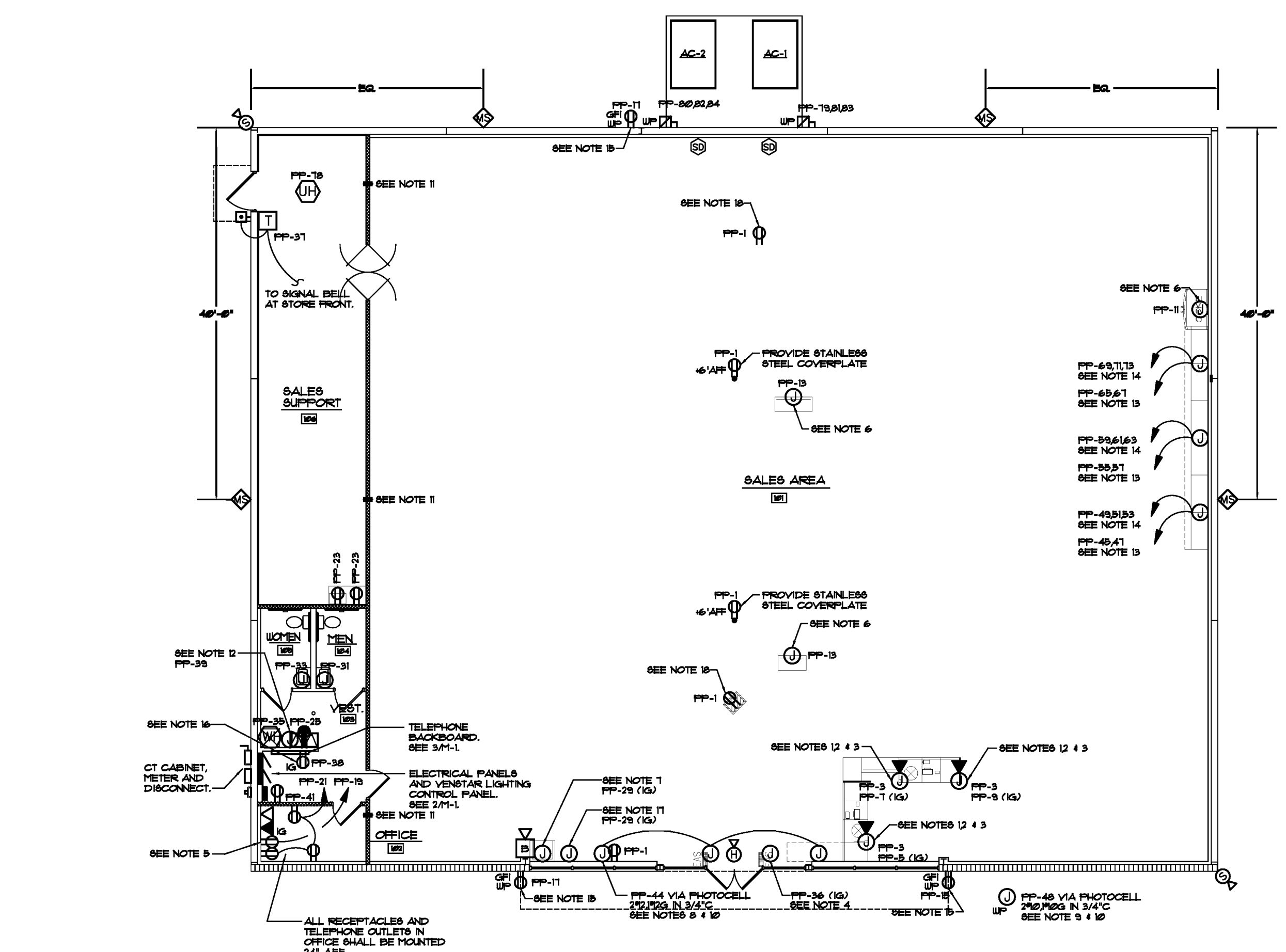
Checked By :
 C. THOMASON

Revisions :

(Future Seal)
 THIS DRAWING AND ITS COPIES ARE THE PROPERTY OF THE ARCHITECT. THEY MAY NOT BE USED FOR PROJECTS OTHER THAN THE DESIGNATED PROJECT WITHOUT THE SPECIFIC WRITTEN APPROVAL OF C. L. HELT ARCHITECT INC. AND OR CHET L. HELT, ARCHITECT

Date :
 01-01-11

Sheet No.
 M-2C
 of 2



1 ELECTRICAL POWER PLAN
 M-2C SCALE: 3/32" = 1'-0"

EXTERIOR MOTION SENSOR SYSTEM SYMBOL LEGEND

	SECURITY HORN MOUNTED ON ROOF ON BACKSIDE OF PARAPET. FEDERAL SIGNAL MODEL 383C-10A
	SECURITY STROBE LIGHT (CLEAR) MOUNTED ON PARGIA AT CORNER OF BUILDING BELOW PARAPET CAP. FEDERAL SIGNAL MODEL 31-61-02C. PROVIDE WITH MODEL LHM2 (WALL MOUNT BRACKET) OR LHM3 (CORNER MOUNT BRACKET)
	EXTERIOR MOTION SENSOR MOUNTED BELOW GUTTER AND NO CLOSER THAN 4 FEET TO DOWNPOUT. PROVIDE REAR LIGHTING MODEL 813000W (06V). MOTION SENSOR SHALL BE ADJUSTED TO POINT DOWNWARD.

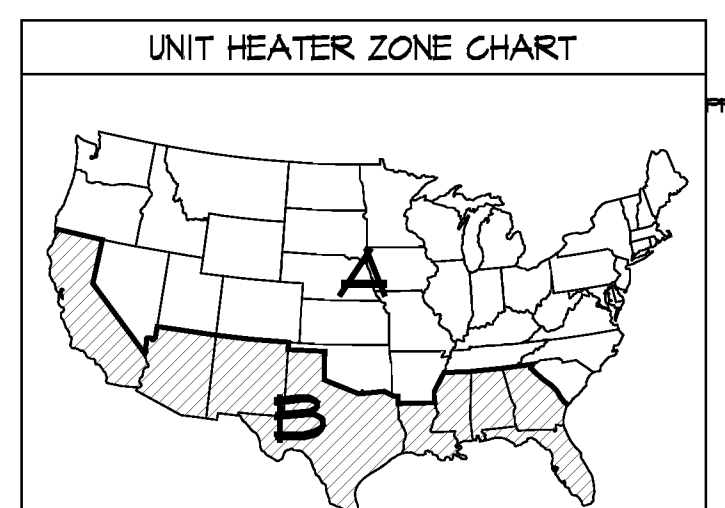
- EXTERIOR MOTION SENSOR SYSTEM NOTES:**
- ELECTRICAL CONTRACTOR SHALL PURCHASE COMPONENTS OF EXTERIOR MOTION SENSOR SYSTEM THROUGH A NATIONAL ACCOUNT PROGRAM. ELECTRICAL CONTRACTOR SHALL CONTACT CHRIS STENEY WITH EDC (ELECTRICAL DISTRIBUTORS, INC.) # 704-372-3646 FOR INFORMATION REGARDING THIS PROGRAM.
 - ELECTRICAL CONTRACTOR SHALL WIRE ALL COMPONENTS OF EXTERIOR MOTION SENSOR SYSTEM ACCORDING TO THE MANUFACTURER'S INSTALLATION INSTRUCTIONS. SEE DETAIL 5/41 FOR WIRING DETAILS.
 - ALL MOTION SENSORS SHALL BE WIRED IN SERIES.

ELECTRICAL SYMBOL SCHEDULE

	CONDUIT RUN CONCEALED, UNLESS NOTED OTHERWISE
	CONDUIT RUN ABOVE CEILING, UNLESS NOTED OTHERWISE
	HORIZONTAL PANEL. ARROWS INDICATE QUANTITY OF CIRCUITS
	STRIP FLUORESCENT FIXTURE. LETTER INDICATES TYPE. FIXTURE ON NIGHT/TEMPERATURE LIGHT CIRCUIT.
	CEILING OR WALL MOUNTED EXIT SIGN RESPECTIVELY. ARROWS AS INDICATED ON PLANS, BATTERY POWERED.
	30 AMPERE SINGLE POLE OR THREE-WAY SWITCH, RESPECTIVELY. MOUNT 48" AFF.
	OCCUPANCY DETECTION SENSOR SWITCH. SENSOR SWITCH MODEL * UMD-104 SIGNAL BELL MOUNTED 1'-6" AFF. CONNECT TO SIGNAL BELL TRANSFORMER.
	DUPLEX RECEPTACLE, MOUNT 18" AFF.
	GROUND FAULT INTERRUPTER RECEPTACLE.
	WEATHERPROOF RECEPTACLE.
	ISOLATED GROUND RECEPTACLE, MOUNT 18" AFF.
	DUPLEX RECEPTACLE MOUNTED IN CEILING.
	RECEPTACLE FOR WATER COOLER. VERIFY EXACT LOCATION WITH PLUMBING CONTRACTOR.
	QUADRUPLEX RECEPTACLE, MOUNT 18" AFF.
	TELEPHONE OUTLET, MOUNT 18" AFF. PROVIDE 4" SQUARE BOX WITH SINGLE GANG RING & TELEPHONE TYPE PLATE. (NOTE 3)
	DATA OUTLET, MOUNT 18" AFF. PROVIDE 4" SQUARE BOX WITH SINGLE GANG RING & TELEPHONE TYPE PLATE, AND EJECT 3/4" CONDUIT RUN BACK TO THE TELEPHONE BACKBOARD. (NOTE 3)
	CONNECT ELECTRIC HOT WATER HEATER INSTALLED ON PLATFORM ABOVE HOP BANK. CONNECT UNIT HEATER.
	JUNCTION BOX PER NEC.
	SIGNAL BELL TRANSFORMER.
	FRACTIONAL HORSEPOWER MANUAL MOTOR STARTER.
	NON-FUSED SAFETY SWITCH, NUMBER INDICATES SWITCH RATINGS.
	AND CONNECT TO BUILDING CONNECTING ELECTRIC SYSTEM. FUSED SAFETY SWITCH NUMBER INDICATES RAMP RATINGS.
	FRACTIONAL HORSEPOWER MOTOR CONNECTION.
	ELECTRICAL PANEL, RECESSED MOUNTED.
	1/2" X 1/4" PLATE RETARDANT PAINTED PLYWOOD COMMUNICATION BACKBOARD. SEE DETAIL 3/41.

- PLUMBING FREEZE PROTECTION NOTES: (EXTREME COLD REGIONS)**
- ALL PLUMBING WATER LINES SHALL BE RUN 2" MINIMUM BELOW FROST LINE.
 - DO NOT RUN PLUMBING WATER LINES IN EXTERIOR WALLS. FOR PLUMBING FIXTURES LOCATED AGAINST EXTERIOR WALLS, FIXTURE DISTRIBUTION LINES SHALL BE RUN EXPOSED IN CONDITIONED SPACE UP THRU SLAB TO CONNECT TO THE SINKS AND TOILETS.

- ELECTRICAL POWER PLAN NOTES:**
- FURNISH AND INSTALL WIRING AND HOOKUP FOR EACH CANNISTER MODULE INCLUDING CONVENIENCE CIRCUIT, DEDICATED CIRCUIT WITH ISOLATED GROUND AND PHONE/DATA CONNECTION. CIRCUITS SHALL BE TERMINATED AT A JUNCTION BOX MOUNTED 2'-6" AFF. WITH 1/2" WHP AND FINAL CONNECTION MADE TO SPECIAL PLUG-IN INSTANT CONNECTOR. FDS OPENING TEAM WILL INSTALL POWER POLE TO FINAL LOCATION BY ATTACHING TO THIS CONNECTOR. VERIFY EXACT LOCATION WITH TENANT'S CONSTRUCTION REPRESENTATIVE.
 - ALL CIRCUITS SERVING RECEPTACLES TO CHECK-OUT AND VENDORS MAY BE RUN IN THE SAME CONDUIT.
 - FDS REQUIRES (4) TELEPHONE/DATA DROPS: (1) IN OFFICE WITH QUAD WALL JACK AND (3) AT CASH CHECKOUT. FIELD VERIFY EXACT LOCATIONS, INSTALLATION AND QUANTITY OF DEVICES WITH FDS STORE OWNER AT JOB SITE. E.G. SHALL PROVIDE 3/4" CONDUIT UP IN WALLS IF NOT LOCATED IN POWER POLES TO ABOVE CEILING. ALL CAT. 5 CABLES SHALL BE RUN BY OTHERS.
 - FURNISH AND INSTALL WIRING AND HOOKUP FOR ONE DEDICATED CIRCUIT WITH ISOLATED GROUND ABOVE CEILING AT STOREFRONT DOORS FOR SECURITY SYSTEM (EAS). CIRCUIT SHALL BE TERMINATED AT A JUNCTION BOX MOUNTED 2'-6" AFF. WITH FINAL CONNECTION MADE TO SPECIAL PLUG-IN INSTANT CONNECTOR. FDS OPENING TEAM WILL INSTALL POWER POLE TO FINAL LOCATION BY ATTACHING TO THIS CONNECTOR. VERIFY EXACT LOCATION WITH TENANT'S CONSTRUCTION REPRESENTATIVE.
 - FURNISH DEDICATED ISOLATED GROUND RECEPTACLES WITH ISOLATED GROUNDING CONDUCTOR BACK TO SERVICE GROUND.
 - FURNISH AND INSTALL WIRING AND HOOKUP FOR REFRIGERATED DRINK BOX AND FRESH DISPLAY. CIRCUIT SHALL BE TERMINATED AT A JUNCTION BOX MOUNTED 2'-6" AFF. WITH 1/2" WHP AND WITH FINAL CONNECTION MADE TO SPECIAL PLUG-IN INSTANT CONNECTOR. FDS OPENING TEAM WILL INSTALL POWER POLE TO FINAL LOCATION BY ATTACHING TO THIS CONNECTOR. VERIFY EXACT LOCATION WITH TENANT'S CONSTRUCTION REPRESENTATIVE.
 - FURNISH AND INSTALL WIRING AND HOOKUP FOR LINUX COMPUTER STATION INCLUDING DEDICATED CIRCUIT. CIRCUIT SHALL BE TERMINATED AT A JUNCTION BOX MOUNTED 2'-6" AFF. WITH FINAL CONNECTION MADE TO SPECIAL PLUG-IN INSTANT CONNECTOR. FDS OPENING TEAM WILL INSTALL POWER POLE TO FINAL LOCATION BY ATTACHING TO THIS CONNECTOR. VERIFY EXACT LOCATION WITH TENANT'S CONSTRUCTION REPRESENTATIVE.
 - FURNISH AND INSTALL CONDUIT AND WIRING FOR EXTERIOR BUILDING SIGN. CIRCUIT SHALL BE TERMINATED AT A JUNCTION BOX ABOVE CEILING. CIRCUIT SHALL BE CONTROLLED BY PHOTOCELL. FINAL CONNECTION SHALL BE MADE BY THE BOARD DETAIL.
 - ELECTRICAL CONTRACTOR SHALL PROVIDE A WEATHERPROOF JUNCTION BOX FOR LIGHTED ROAD SIGN. MOUNT TO SIGN FEEDBACK OR POLE. ELECTRICAL CONTRACTOR SHALL RUN WIRE IN CONDUIT AS SPECIFIED ON PLANS TO SIGN. FINAL CONNECTIONS SHALL BE MADE BY THE ELECTRICAL CONTRACTOR.
 - ALL EXTERIOR LIGHTING AND SIGN CIRCUITS SHALL BE CONTROLLED BY PHOTOCELL MOUNTED ON BACK SIDE OF FRONT PARAPET WALL.
 - PROVIDE A (1) ONE FOOT PIECE OF 3" EBFY CONDUIT RUNNING THROUGH THE WALL AT LOCATIONS AS SPECIFIED ON THE PLANS. ALL CONDUITS SHALL BE LOCATED 12" ABOVE THE CEILING. PROVIDE FIRE GASK AND CAP OFF CONDUIT FOR FUTURE USE BY FAMILY DOLLAR.
 - WIRE ELECTRICAL CIRCUIT FOR HEAT TAPE ON DOMESTIC WATER LINES IN NORTHERN CLIMATES ONLY. FIELD COORDINATE ACTUAL ELECTRICAL REQUIREMENTS AND LOCATION WITH PLUMBING CONTRACTOR.
 - FURNISH AND INSTALL WIRING (750 HOTS, 150 NEUTRAL, 150 GROUND) AND HOOKUP FOR ONE 208V-1PH 30A DEDICATED CIRCUIT FOR FREEZER. CIRCUIT SHALL BE TERMINATED AT A JUNCTION BOX MOUNTED 2'-6" AFF. WITH 1/2" WHP AND WITH FINAL CONNECTION MADE TO SPECIAL PLUG-IN INSTANT CONNECTOR. FDS OPENING TEAM WILL INSTALL POWER POLE TO FINAL LOCATION BY ATTACHING TO THIS CONNECTOR. VERIFY EXACT LOCATION WITH TENANT'S CONSTRUCTION REPRESENTATIVE.
 - FURNISH AND INSTALL WIRING (750 HOTS, 150 NEUTRAL, 150 GROUND) AND HOOKUP FOR THREE 120V-1PH 30A DEDICATED CIRCUITS FOR COOLERS. CIRCUITS SHALL BE TERMINATED AT A JUNCTION BOX MOUNTED 2'-6" AFF. WITH 1/2" WHP AND WITH FINAL CONNECTION MADE TO SPECIAL PLUG-IN INSTANT CONNECTOR. FDS OPENING TEAM WILL INSTALL POWER POLE TO FINAL LOCATION BY ATTACHING TO THIS CONNECTOR. VERIFY EXACT LOCATION WITH TENANT'S CONSTRUCTION REPRESENTATIVE.
 - EXTERIOR RECEPTACLES SHALL BE RECESSED IN WALL WITH FACE FLUSH WITH WALL.
 - PROVIDE DEDICATED ISOLATED GROUND RECEPTACLES WITH ISOLATED GROUNDING CONDUCTOR BACK TO SERVICE GROUND. SEE TELEPHONE BOARD DETAIL.
 - FURNISH AND INSTALL WIRING AND HOOKUP FOR ATM STATION INCLUDING DEDICATED CIRCUIT. CIRCUIT SHALL BE TERMINATED AT A JUNCTION BOX MOUNTED 2'-6" AFF. WITH FINAL CONNECTION MADE TO SPECIAL PLUG-IN INSTANT CONNECTOR. FDS OPENING TEAM WILL INSTALL POWER POLE TO FINAL LOCATION BY ATTACHING TO THIS CONNECTOR. VERIFY EXACT LOCATION WITH TENANT'S CONSTRUCTION REPRESENTATIVE.
 - FURNISH AND INSTALL WIRING AND HOOKUP FOR SECURITY MONITOR. CIRCUIT SHALL BE TERMINATED TO A CABLE RECEPTACLE MOUNTED 2'-6" AFF. VERIFY EXACT LOCATION WITH TENANT'S CONSTRUCTION REPRESENTATIVE. VERIFY EXACT DETAIL ON ARCHITECTURAL DRAWINGS FOR ADDITIONAL INSTALLATION INSTRUCTIONS.



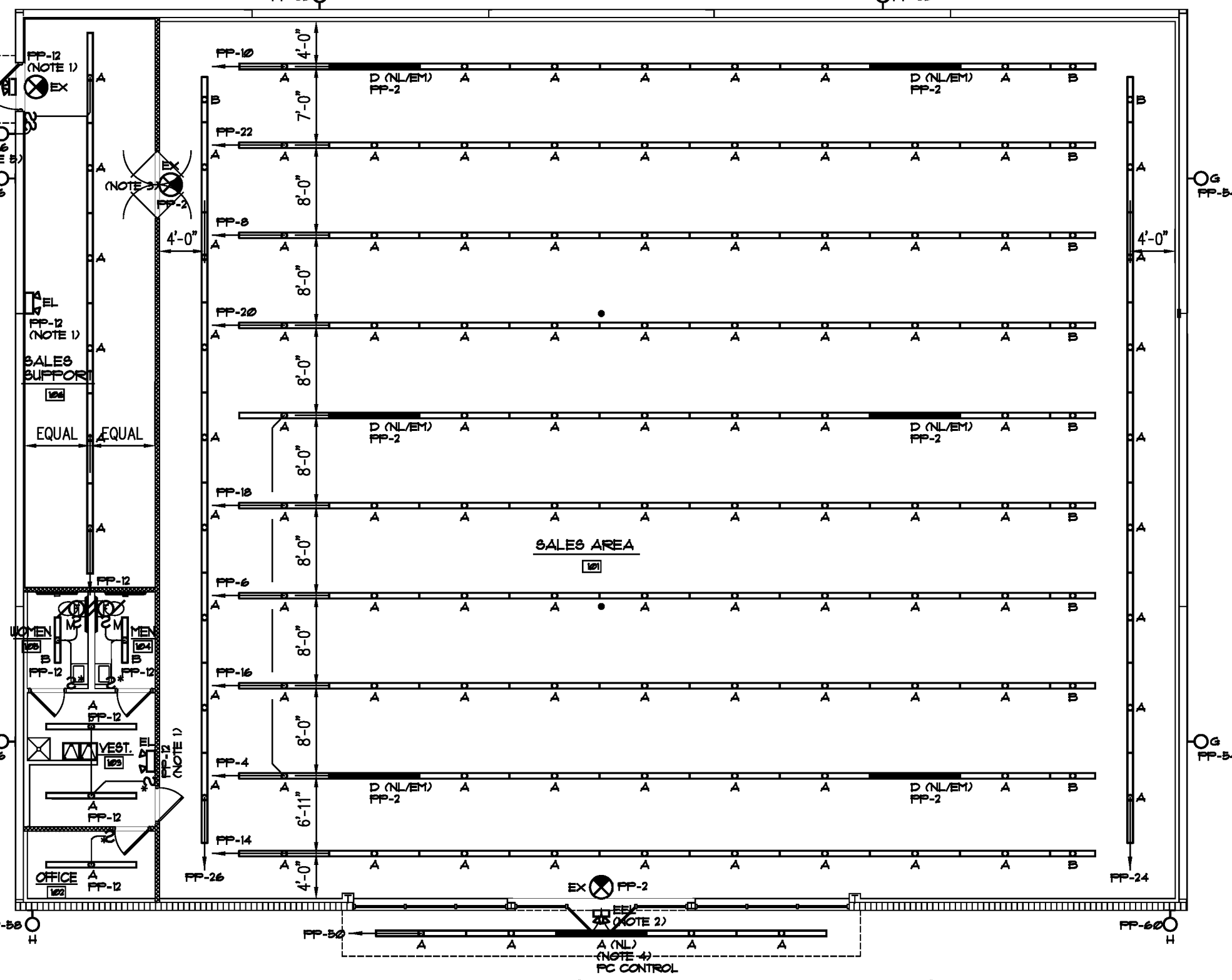
UNIT HEATER ZONE CHART

ZONE A: PROVIDE UNIT HEATER IN STOCKROOM.
 ZONE B: NO UNIT HEATER REQUIRED.

UNIT HEATER SHALL BE MINIMUM 25 MBH GAS INPUT IF GAS HVAC SYSTEMS ARE USED. UNIT HEATER SHALL BE 15 KW (3 PHASE) IF AN ALL ELECTRIC STORE.

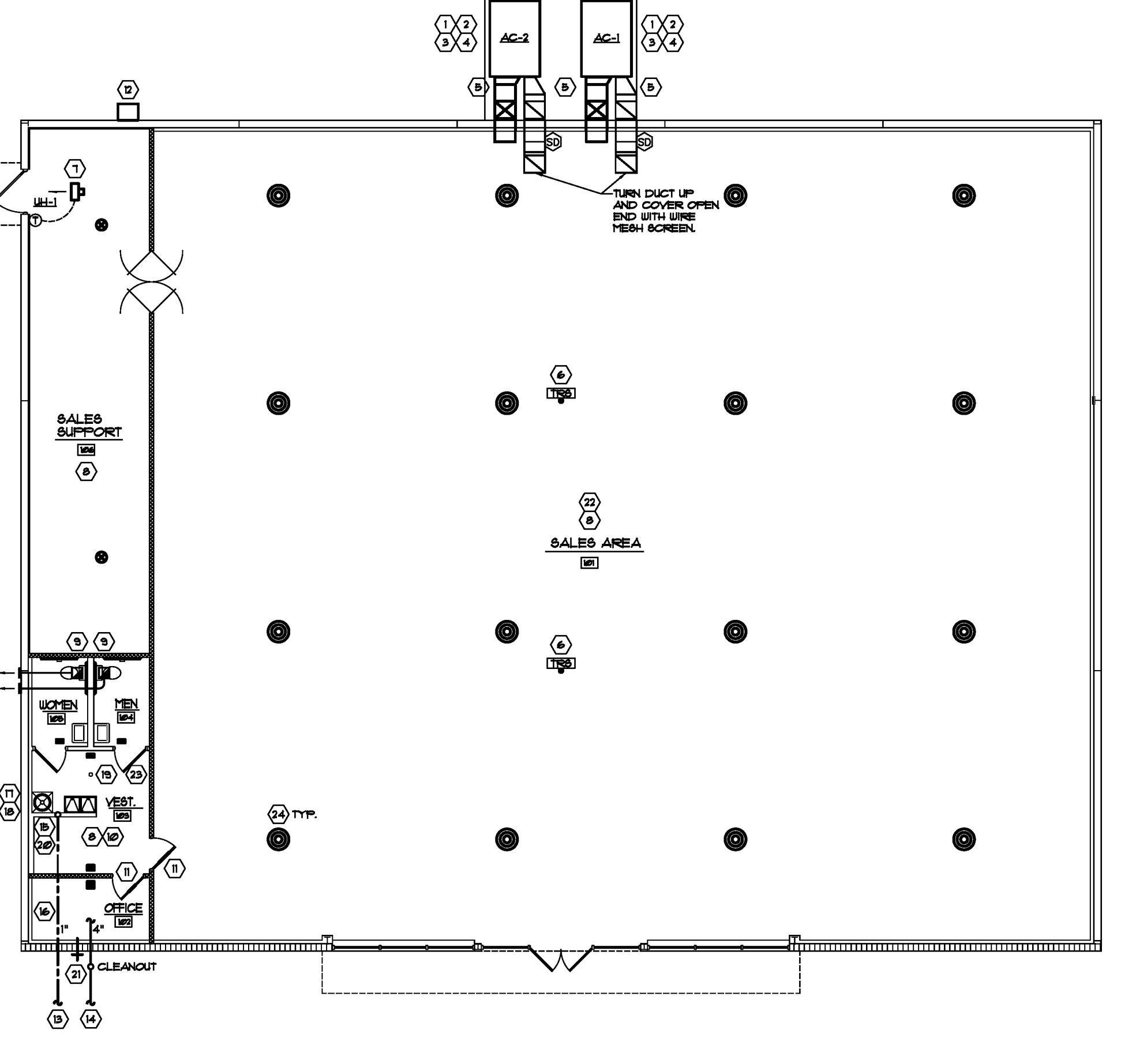
MECHANICAL AND PLUMBING PLAN KEYED NOTES:

- TWO (2) GROUND MOUNTED PACKAGED HVAC UNITS WITH GAS HEAT ARE PREFERRED. IF GAS IS NOT AVAILABLE, THEN GROUND MOUNTED PACKAGED HVAC UNITS WITH ELECTRIC STRIP HEATING SHALL BE UTILIZED.
- HVAC UNITS SHALL BE SIZED FOR A MINIMUM 400 SQUARE FEET PER TON. 8000 AND 8000 48 (STORES) TYPICALLY USE TWO (2) 1/2 TON PACKAGED HVAC UNITS. 5000 OF STORES TYPICALLY USE ONE (1) 1/2 TON PACKAGED HVAC UNIT AND ONE (1) 2/3 TON PACKAGED HVAC UNIT. MECHANICAL ENGINEERS SHALL UTILIZE HVAC LOAD CALCULATION PROGRAM TO DETERMINE ACTUAL SIZE REQUIRED FOR ACTUAL CLIMATE CONDITIONS OF PROJECT AREA.
- PACKAGED HVAC UNITS SHALL BE YORK OR CARRIER ONLY. PACKAGED HVAC UNITS WITH GAS HEAT SHALL BE YORK 2F SERIES OR CARRIER 40T0 SERIES. PACKAGED HVAC UNITS WITH ELECTRIC STRIP HEAT SHALL BE YORK 2F SERIES OR CARRIER 40T0 SERIES. FOR YORK NATIONAL ACCOUNTS, CONTACT FRED BRYANT 408-495-8349 OR SHALL TO FREDERICKBRYANT@YORKCORP.COM. FOR CARRIER NATIONAL ACCOUNTS (NATS30) CONTACT TERRE TRULL 417-366-4433 OR SHALL TO TERRETRULL@CARRIERCORP.COM WITH THE SQUARE FOOTAGE OF THE STORE, VOLTAGE, HEAT AND ANY SITE SPECIFIC REQUIREMENT FOR THE FAMILY DOLLAR STORE. ALL MODEL NUMBER AND CONTACT INFORMATION IS SUBJECT TO CHANGE WITHOUT NOTICE.
- PROVIDE CONCRETE EQUIPMENT PAD. FIELD COORDINATE ACTUAL LOCATION WITH CIVIL SITE PLAN, PROPERTY LINES AND STRUCTURAL. PROVIDE FINISHES AROUND EQUIPMENT PAD IF REQUIRED.
- RUN INSULATED DUCTWORK TIGHT AGAINST BUILDING WALL TO ABOVE CEILING. SEE AC UNIT DETAIL.
- TEMPERATURE SENSORS MOUNTED AT 8'-6" AFF. THERMOSTATS AND REPEAT SENSORS ARE BEING SUPPLIED WITH THE VENDOR SURVEYOR EQUIPMENT. MECHANICAL CONTRACTOR SHALL MOUNT AND WIRE REPEAT SENSORS AND THERMOSTATS.
- UNIT HEATER MOUNTED 8'-6" AFF. TO BOTTOM OF HEATER AND 4'-6" FROM EXTERIOR DOOR (CENTERED ON DOOR). RAN BLUE EXHAUST PIPE OUT THE SIDE OF WALL, DO NOT PENETRATE THE ROOF. SEE UNIT HEATER ZONE CHART THIS PAGE FOR REGIONAL REQUIREMENTS OF THIS SPECIFICATION.
- DUCTWORK SHALL GALVANIZED SHEET METAL FABRICATED AND INSTALLED IN ACCORDANCE WITH AIRMASS AND SPACIA RECOMMENDATIONS. ALL SQUARE ELBOWS SHALL INCLUDE SINGLE THROU-ROSS TURNING VANES. FIBERGLASS DUCTBOARD SHALL NOT BE USED AND WILL NOT BE ACCEPTED.
- INTERNAL INSULATION SHALL BE PROVIDED ON ALL RETURN AIR DUCTWORK AND OUTSIDE AIR DUCTWORK. INTERNAL INSULATION SHALL BE PROVIDED ON SUPPLY AIR DUCTWORK FROM HVAC UNIT TO 18 FEET INSIDE THE BUILDING. INTERNAL INSULATION SHALL BE MINIMUM 1" THICK 1/2" POLYISOCYANURATE NEOPRENE COATED, AND ADHERED WITH AN APPROVED ADHESIVE WITH 100% COVERAGE AND STICK CLIPS ON 2' CENTERS. SHEET METAL SIZES SHALL INCREASE ACCORDINGLY TO ALLOW FOR DUCT LINES. SUPPLY AIR DUCTWORK RUN ABOVE THE CEILING IN CONCEALED AREAS SHALL BE UNWRAPPED WITH 2" FIBERGLASS INSULATION.
- PROVIDE CEILING MOUNTED EXHAUST FAN (MINIMUM 7 CFM EXHAUST) OUT TO WALL CAP. INTERLOCK FAN WITH RESTROOM LIGHTS.
- PROVIDE MINIMUM 50 CFM SUPPLY AIR IN OFFICE, 60 CFM IN EACH RESTROOM, 100 CFM IN VESTIBULE NEAR PANELS AND 50 CFM IN VESTIBULE NEAR RESTROOMS.
- PROVIDE LOUVERED DOOR GRILLE FOR RETURN AIR TRANSFER.
- GAS METER
- 3/4" DOMESTIC WATER SERVICE LINE. PROVIDE 3/4" WATER TAP AND METER WITH 3/4" WATER LINE RUN FROM METER TO BUILDING. PROVIDE PRESSURE REDUCING VALVE WHERE WATER PRESSURE EXCEEDS 100 PSI. COORDINATE ROUTING AND BACKFLOW PREVENTER REQUIREMENTS WITH CIVIL ENGINEER.
- 4" SANITARY WASTE SERVICE. COORDINATE ROUTING AND INVERT WITH CIVIL ENGINEER.
- COLD WATER RISER UP THRU SLAB WITH SHUT-OFF VALVE IN WALL. PROVIDE ACCESS PANEL IN WALL.
- COLD WATER LINE UNDER SLAB.
- LOCATE ELECTRIC HOT WATER HEATER ABOVE HOP BANK WITH 6" CLEAR TO BOTTOM OF WATER HEATER SUPPORT PLATFORM. MINIMUM 10 GALLON, 15 KW.
- HOP BANK SHALL BE 2404 MOLDED STONE AND MOUNTED ON FLOOR. PROVIDE WITH HOSE AND HOP HANGER BRACKET.
- PROVIDE FLOOR DRAIN WITH TRAP PRIOR IN FRONT OF HOP BANK.
- HEAT TAPE SHALL BE PROVIDED FOR ALL DOMESTIC WATER LINES LOCATED IN EXTERIOR WALLS IN CLIMATE WHERE PIPES ARE SUBJECT TO FREEZING.
- PROVIDE RECESSED BOX TYPE WALL HYDRANT FOR NON-FREEZING AREAS EQUAL TO 100CFDOPD 804 WITH ANTI-SIPHON VACUUM BREAKER. FOR AREAS SUBJECT TO FREEZING TEMPERATURES, PROVIDE RECESSED BOX TYPE PRESSURE BACKFLOW PREVENTER REQUIREMENTS WITH CIVIL ENGINEER.
- PROVIDE FLOOR DRAIN WITH TRAP PRIOR IN FRONT OF HOP BANK.
- ALL PLUMBING FIXTURES SHALL BE COMMERCIAL GRADE AND SHALL COMPLY WITH ALL NATIONAL, STATE AND LOCAL CODES.
- WATER CLOSURE SHALL BE AMERICAN STANDARD MODEL 246216 FLOURE DUAL FLUSH RIGHT HEIGHT ELONGATED TOILET. NO SUBSTITUTIONS ALLOWED.
- LAUNDRY SINKS SHALL BE AMERICAN STANDARD MODEL 346223S METERSINK CENTERBASK FAUCET. NO SUBSTITUTIONS ALLOWED.
- SELO DRINKING FOUNTAIN SHALL ELKAY E2513AC BARBERSHOP FREE. STANDARD COLOR TO BE SELECTED BY THE ARCHITECT. DWP, PH, TO MEET HANDICAPPED CODE REQUIREMENTS AND ADA REQUIREMENTS. PROVIDE WITH DRAINAGE.
- PROVIDE SUPPLY DIFFUSERS IN SALES AREA BASED ON ONE (1) SUPPLY DIFFUSER FOR EVERY 500 SF OF FLOOR AREA (MINIMUM). SUPPLY DIFFUSERS SHALL BE ADJUSTABLE ROUND. MOUNT FACE OF DIFFUSER AT 2'-0" AFF. DIFFUSER SHALL NOT BE LOCATED DIRECTLY ABOVE A LIGHT FIXTURE. COORDINATE HVAC DUCT DESIGN AND LAYOUT WITH STRUCTURAL AND 1'-6" CLEARANCE PRIOR TO CONSTRUCTION.



2 ELECTRICAL LIGHTING PLAN
 M-2C SCALE: 3/32" = 1'-0"

GENERAL NOTE: ALL EXTERIOR LIGHTING SHALL BE CONTROLLED BY PHOTOCELL. NOTE 1: WIRE "EX" AND "EL" TO HOT LEG OF NEAREST LOCAL LIGHTING CIRCUIT AHEAD OF ANY SWITCHING INCLUDING CONTACTORS. NOTE 2: WIRE "EL" TO HOT LEG OF NEAREST EXTERIOR LIGHTING CIRCUIT AHEAD OF ANY SWITCHING INCLUDING CONTACTORS. NOTE 3: SUSPEND EXIT SIGN FROM STRUCTURE USING 1" RIGID CONDUIT. NOTE 4: NIGHT LIGHT FIXTURE SHALL BE CONTROLLED BY PC, ON AT DUSK, OFF AT DAWN. WIRE VIA PC TO HOT LEG OF NEAREST LIGHTING CIRCUIT AHEAD OF ANY SWITCHING INCLUDING CONTACTORS. NOTE 5: LIGHT SHALL BE CONTROLLED BY WALL SWITCH. WIRE TO HOT LEG OF LIGHTING CIRCUIT AHEAD OF ANY SWITCHING INCLUDING CONTACTORS.



3 MECHANICAL / PLUMBING PLAN
 M-2C SCALE: 3/32" = 1'-0"