

C.L. Helt, Architect Inc.
 1136 Greenwood Cliff
 Charlotte, NC 28204
 Ph. 704-342-1686
 Fx. 704-343-0054
 E-MAIL CHHELTL@CLHELT.COM

TYPICAL PANEL SCHEDULES

LIGHTING FIXTURE SCHEDULE						
FIXTURE	MANUFACTURER / DESCRIPTION	NUMBER AND TYPE OF LAMPS	NUMBER OF BALLASTS	WATTS	VOLTS	MOUNTING / NOTES
A	FDS-BLI-8 8' FLUORESCENT STRIP WITH P8300 BALLAST LITHONIA TC 2 32	4-F28T8 LPH284EXU30	1	102	120	SEE NOTE 1 1, 2, 4, 7
B	FDS-BLI-4 4' FLUORESCENT STRIP WITH P8300 BALLAST LITHONIA C 2 32	2-F28T8 LPH284EXU30	1	96	120	SEE NOTE 1 1, 2, 4, 7
C	NOT USED					
D	FDS-BLI-8 8' FLUORESCENT STRIP WITH P8300 EMERGENCY BALLAST LITHONIA TC 2 32	4-F28T8 LPH284EXU30	1	102	120	SURFACE CEILING 1, 2, 4, 7, 9
G	LITHONIA TUN 300W/18 SCIA LPI EXTERIOR WALL BRACKET	1-320W METAL HALIDE	1	320	120	WALL BRACKET 3, 8
H	LITHONIA TRA-1000W-1A-TB-LPI GENERAL PURPOSE LARGE FLOODLIGHT	1-1000W METAL HALIDE	1	1000	120	- 3
EEL	LITHONIA APN-150/21T-DB-EXT EXTERIOR EMERGENCY LIGHT WITH 2 HEADS, 90 MIN. BATTERY BACKUP AND UL LISTED FOR WET LOCATION	2-6V/8U NENON	-	21	120	WALL BRACKET 3
EX	LITHONIA LQF-50/3-R-300T7T-EN EXIT SIGN WITH NICKEL CADMIUM 90 MINUTE BATTERY BACKUP AND 180 DEGREE BEAM ANGLE	LED	-	1	120	UNIVERSAL MOUNT 2
EL	LITHONIA ELV EMERGENCY LIGHT WITH 2 ADJUSTABLE HEADS AND 90 MINUTE BATTERY BACKUP	2-6V/2U KRYPTON	-	1	120	UNIVERSAL MOUNT 2

LIGHTING FIXTURE SCHEDULE NOTES:
 1. PROVIDE FIXTURE WITH ENERGY SAVING BALLAST.
 2. COORDINATE EXACT LOCATION OF FIXTURES WITH ARCHITECTURAL REFLECTED CEILING PLAN.
 3. PROVIDE FIXTURE LOCATION LABEL.
 4. PROVIDE LOW TEMPERATURE BALLAST FOR EXTERIOR FIXTURES.
 5. PROVIDE SPACERS AS REQUIRED.
 6. COORDINATE LOCATION WITH ANY PLANNED SIGNAGE ON SIDE OR REAR WALLS (SEE A-2).
 7. FIXTURES SHALL BE CHAIN HANG WITH TOP OF FIXTURE AT 7'-6" AFF. IN AREAS WITH EXPOSED STRUCTURE. FIXTURES SHALL BE SURFACE MOUNTED IN AREAS WITH GYP. BOARD OR LAT-IN CEILING.
 8. FIXTURE IS SHIELDING IS REQUIRED, BRIGIT MODEL WITH 320 TB SCIA LPI IS REQUIRED.
 9. USE P8300 BALLASTS IF ADDITIONAL COVERAGE IS REQUIRED. VERIFY WITH LOCAL CODES.

LIGHTING NOTE:
 ELECTRICAL CONTRACTOR SHALL PURCHASE LIGHT FIXTURES THROUGH A NATIONAL ACCOUNT PROGRAM. ELECTRICAL CONTRACTOR SHALL CONTACT CHRIS STONEY WITH EDI (ELECTRICAL DISTRIBUTORS, INC.) # 704-372-3646 FOR INFORMATION REGARDING THIS PROGRAM.

NON-SERVICE ENTRANCE RATED				PANEL FP (SECTION 1)		TYPE		CLASS, LOCAL SERIES RATED	
200V/120V VOLTS 3P, 4W				400 AMP MAIN LUGS ONLY		NEUTRAL INSULATED		NEUTRAL INSULATED	
RECEPTACLES - SALES AREA	12	20	1	2	100	D	LIGHTING - EMERGENCY	(30%)	
RECEPTACLES - CHECKOUT	12	20	3	4	20	D	LIGHTING - SALES AREA	(30%)	
(15) CASH REGISTER	12	20	5	6	20	D	LIGHTING - SALES AREA	(30%)	
(15) CASH REGISTER	12	20	1	1	20	D	LIGHTING - SALES AREA	(30%)	
SPARE	-	20	3	3	20	D	LIGHTING - SALES AREA	(30%)	
COKE MACHINE	12	20	1	1	20	D	LIGHTING - RECEIVING	(30%)	
PROMO DISPLAY (2)	12	20	13	14	20	D	LIGHTING - SALES AREA	(30%)	
RECEPTACLES - EXTERIOR	12	20	15	16	20	D	LIGHTING - SALES AREA	(30%)	
RECEPTACLES - EXTERIOR	12	20	17	18	20	D	LIGHTING - SALES AREA	(30%)	
RECEPTACLES - OFFICE	12	20	19	20	20	D	LIGHTING - SALES AREA	(30%)	
RECEPTACLES - OFFICE	12	20	21	22	20	D	LIGHTING - SALES AREA	(30%)	
RECEPTACLES - OFFICE	12	20	23	24	20	D	LIGHTING - SALES AREA	(30%)	
ELEC. WATER COOLER	12	20	25	26	20	D	LIGHTING - SALES AREA	(30%)	
SPARE	-	20	27	28	20	D	LIGHTING - SALES AREA	(30%)	
UNI-CRU / ATM	12	20	29	30	100	D	NITECH ALARM SYSTEM		
HAND DRYER	12	20	31	32	100	D	OUTSIDE ALARM SYSTEM		
HAND DRYER	12	20	33	34	100	D	LIGHTING CONTROL CIRCUIT		
WATER HEATER	12	20	35	36	100	D	EAS		
SIGNAL BELL	12	20	37	38	20	D	TELEPHONE BOARD		
HEAT TAPE	12	20	39	40	20	D	SPARE		
IRRIGATION SYSTEM	12	20	41	42	20	D	SPARE		
SUBTOTAL				TOTAL KVA		SUBTOTAL			

* PROVIDE HANDLE LOCKING DEVICE (30% 30A LIGHTS (SWITCHING DUTY RATED BREAKER)
 (30% 10A LIGHTS (SWITCHING DUTY RATED BREAKER)
 PROVIDE 400A FEED THRU LUGS

NON-SERVICE ENTRANCE RATED				PANEL FP (SECTION 2)		TYPE		CLASS, LOCAL SERIES RATED	
200V/120V VOLTS 3P, 4W				400 AMP MAIN LUGS ONLY		NEUTRAL INSULATED		NEUTRAL INSULATED	
SPARE	-	20	43	44	20	D	LIGHTING - PARAPET SIGN	(PC)	
FREEZER	10	20	45	46	20	D	SPARE	(PC)	
COOLER	10	20	47	48	20	D	LIGHTING - ROAD SIGN	(PC)	
COOLER	10	20	49	50	20	D	LIGHTING - CANOPY	(PC)	
COOLER	10	20	51	52	20	D	LIGHTING - EXT. BLDG.	(PC)	
COOLER	10	20	53	54	20	D	LIGHTING - EXT. BLDG.	(PC)	
FREEZER	10	20	55	56	20	D	LIGHTING - EXT. BLDG.	(PC)	
COOLER	10	20	57	58	20	D	LIGHTING - FLOODS	(PC)	
COOLER	10	20	59	60	20	D	LIGHTING - FLOODS	(PC)	
COOLER	10	20	61	62	20	D	SPARE	(PC)	
COOLER	10	20	63	64	20	D	SPARE	(PC)	
FREEZER	10	20	65	66	20	D	SPARE	(PC)	
COOLER	10	20	67	68	20	D	SPARE ONLY	(PC)	
COOLER	10	20	69	70	20	D	SPARE ONLY	(PC)	
COOLER	10	20	71	72	20	D	U-1 (ELECTRIC - TSKW)	(PC)	F ELECTRIC UNIT HEATER IS USED
COOLER	10	20	73	74	30	D	U-1 (ELECTRIC - TSKW)	(PC)	F GAS UNIT HEATER IS USED
SPARE	-	20	75	76	20	D	SPARE		
SPARE	-	20	77	78	20	D	U-1 (GAS)		
AC-1 (MAX 150A BREAKER)	79	80	80	80					
AC-2 (MAX 150A BREAKER)	81	82	83	83					
SUBTOTAL				TOTAL KVA		SUBTOTAL			

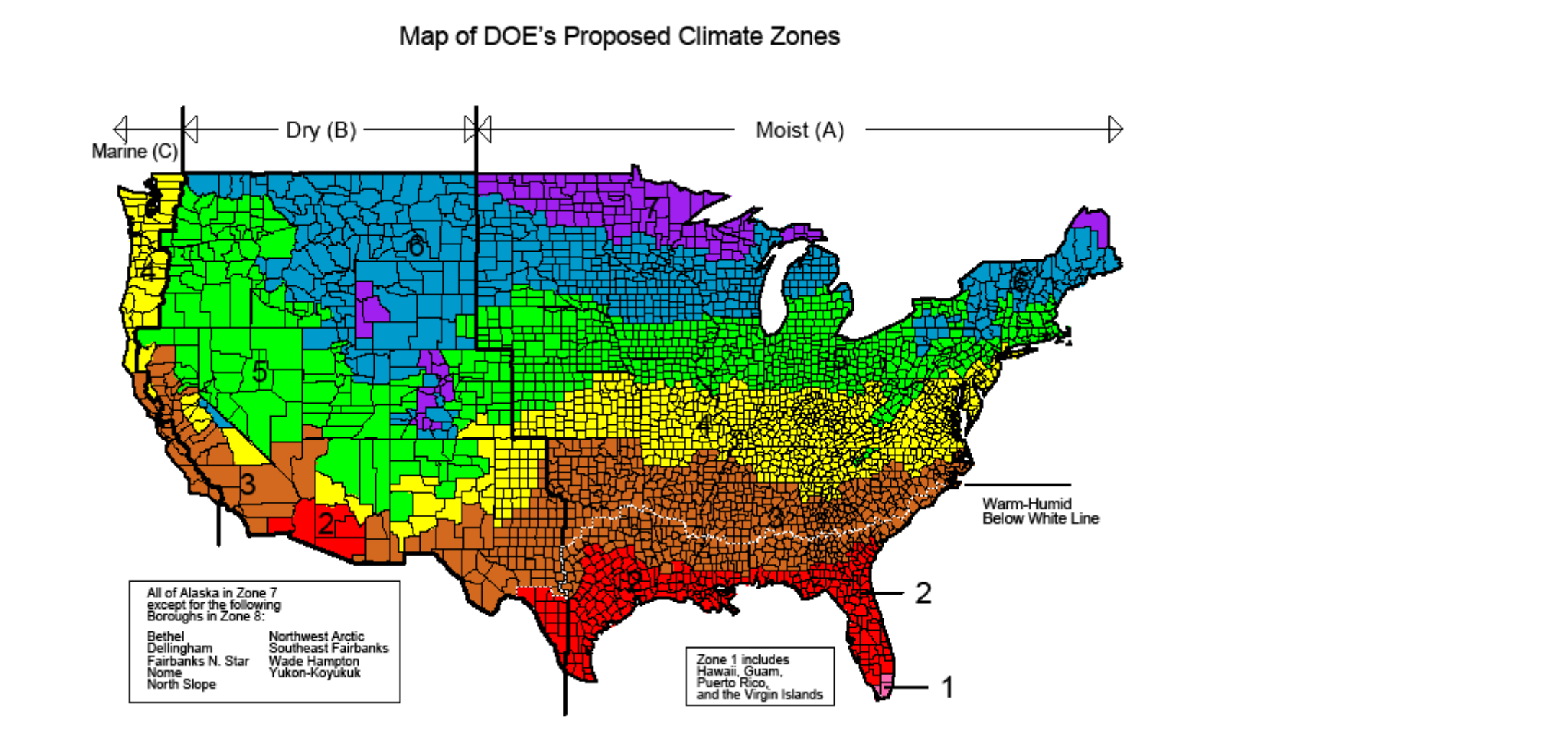
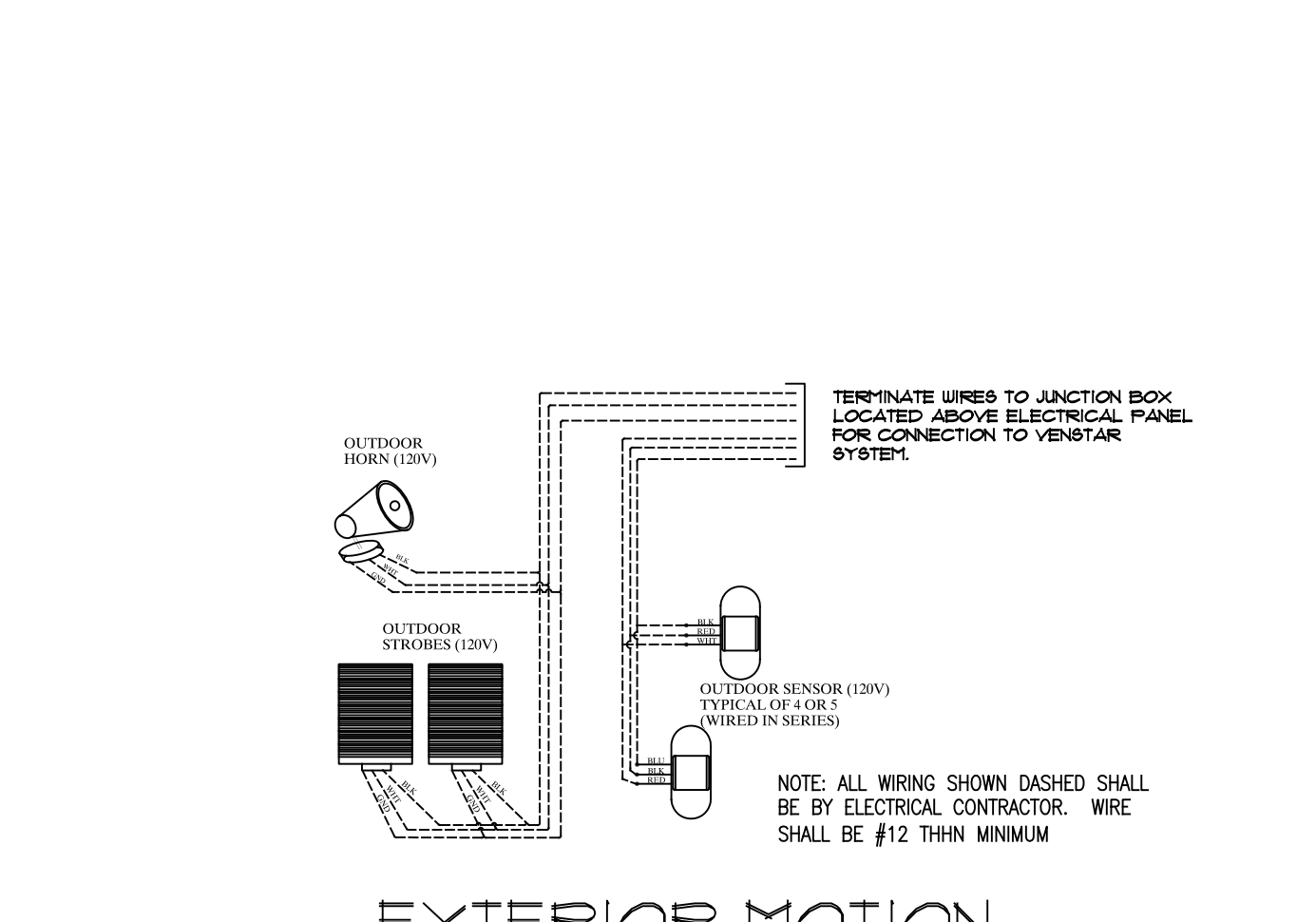
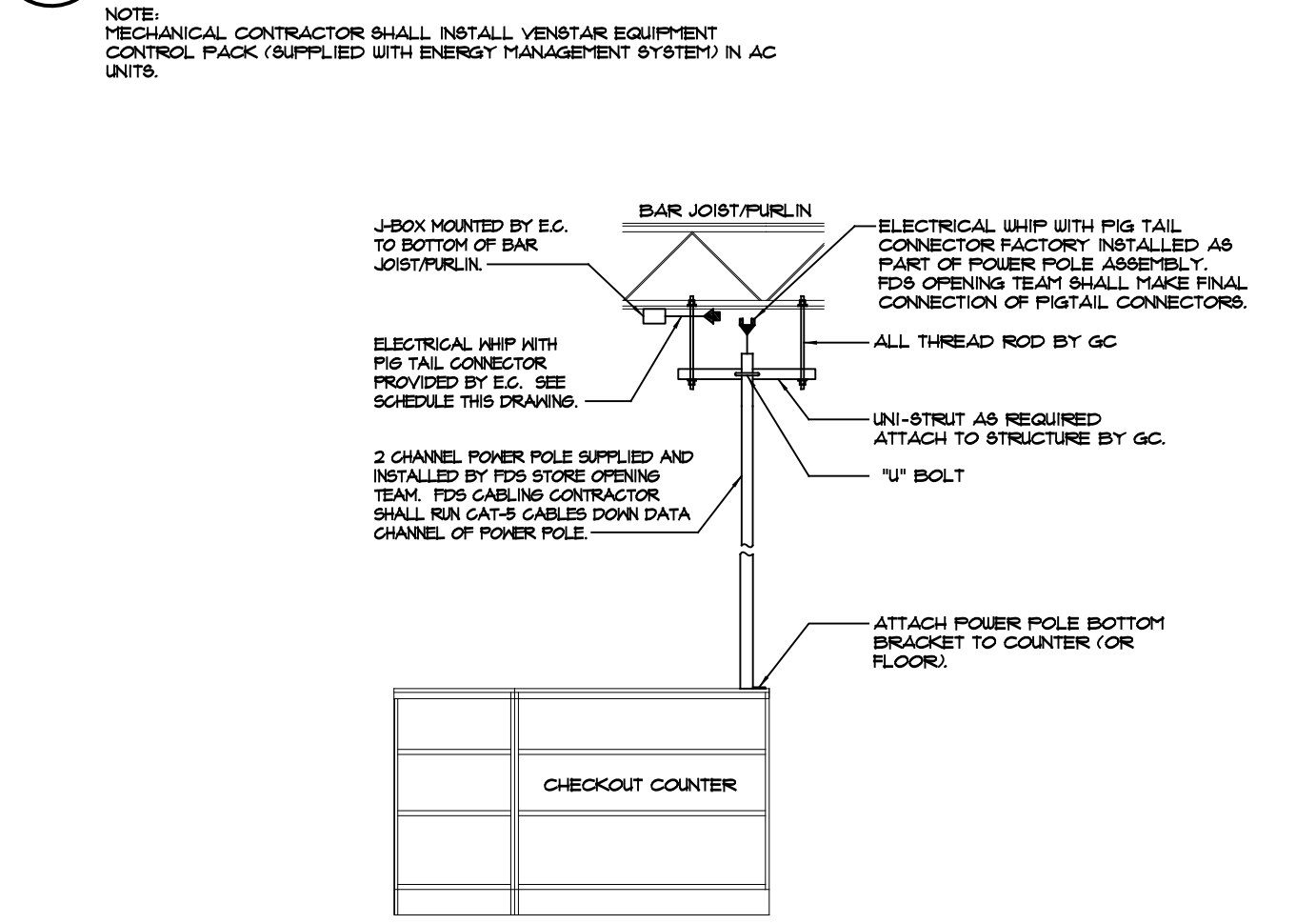
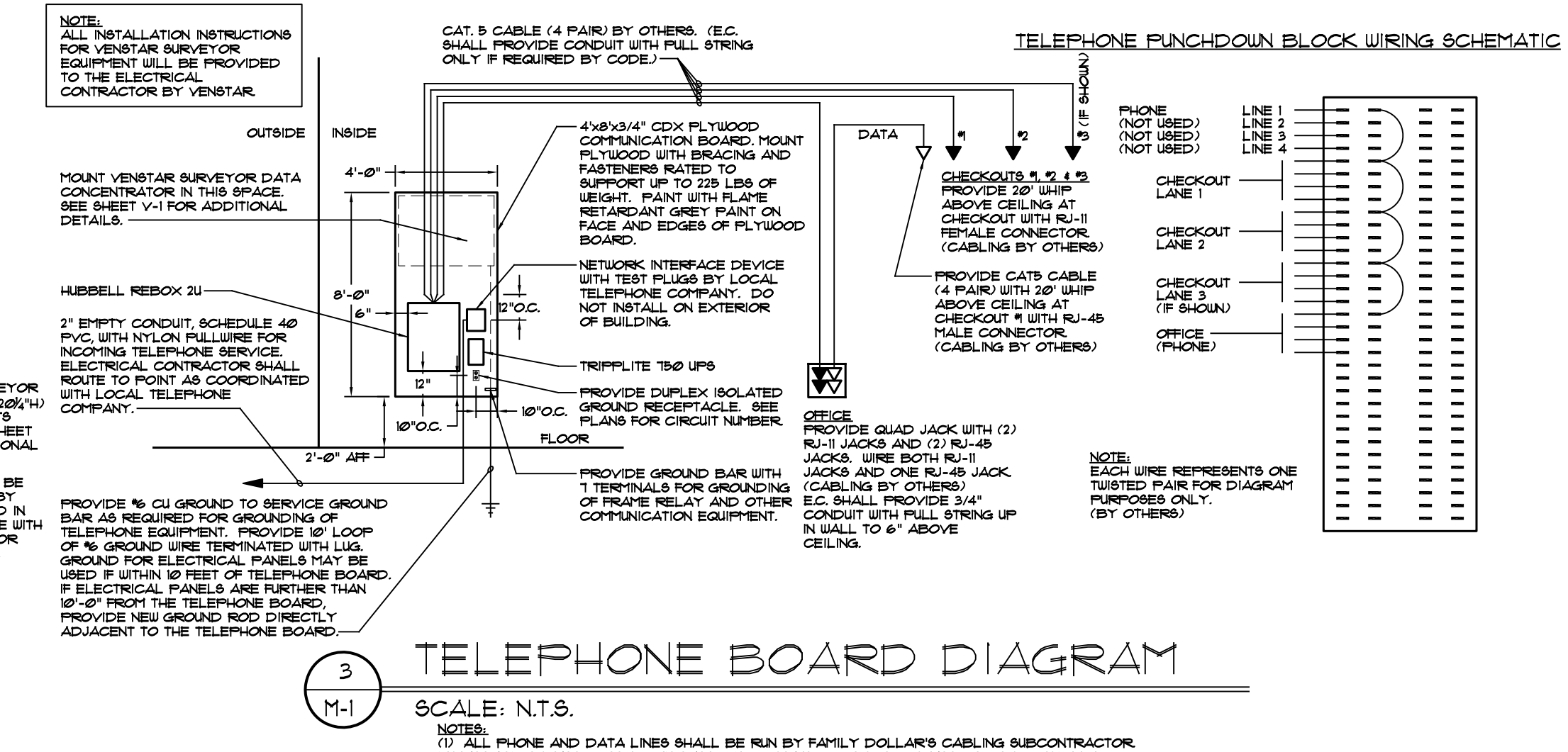
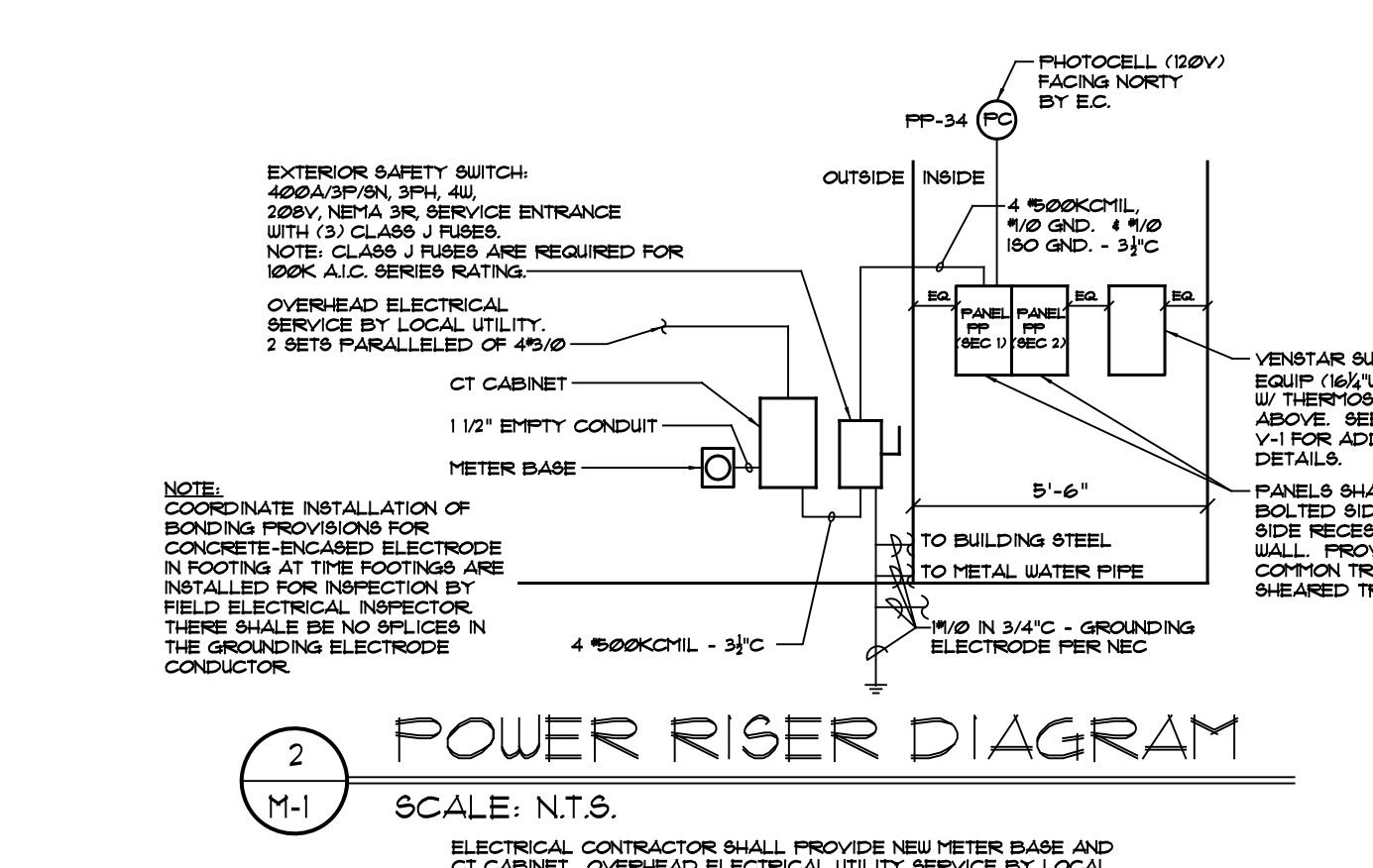
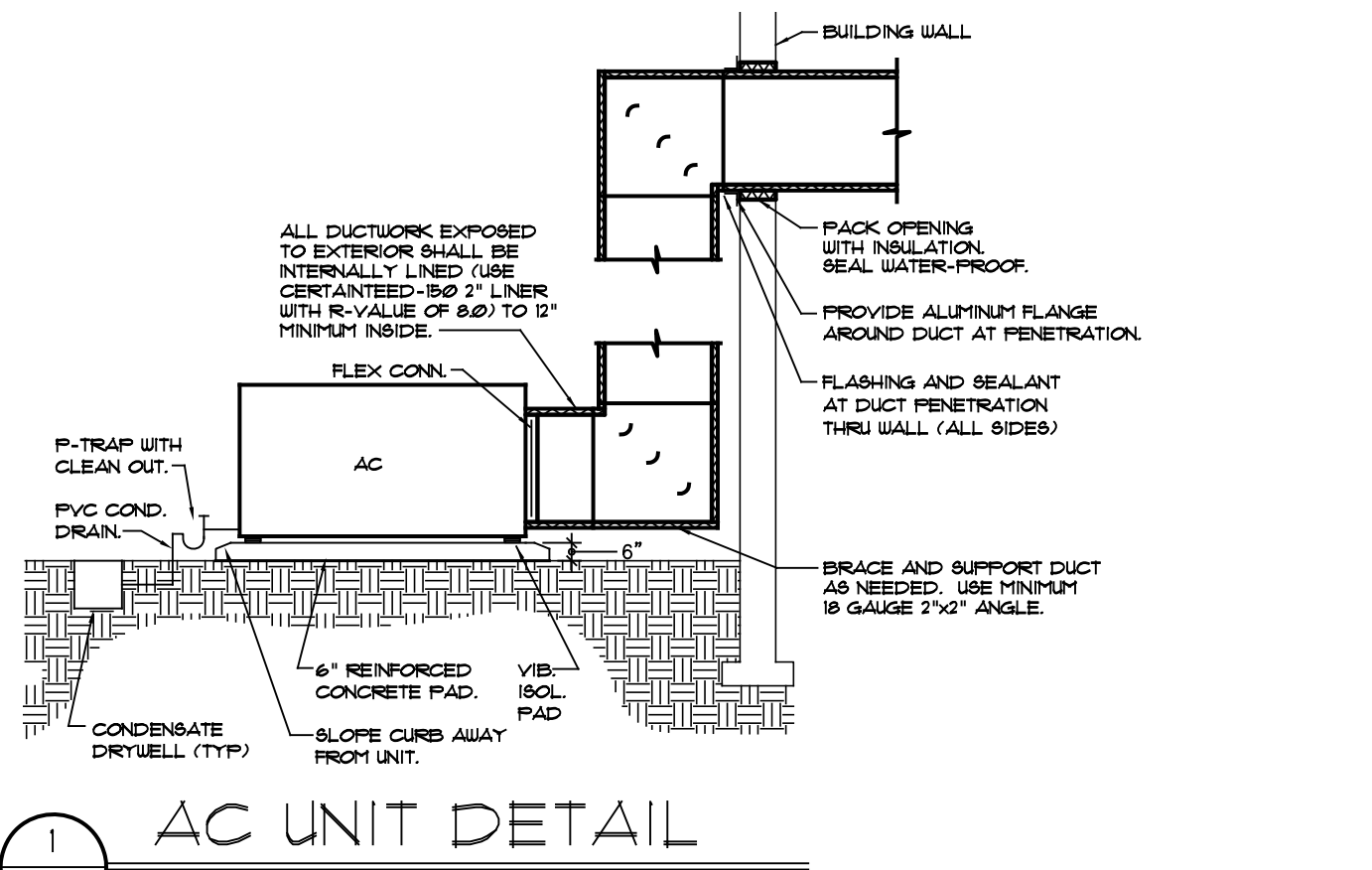
* PROVIDE HANDLE LOCKING DEVICE (PC) = PHOTOCELL CONTROLLED

ELECTRICAL WHIP W/PIGTAIL SCHEDULE

QTY	ITEM #	DESCRIPTION	POWER POLES	NOTES (SEE M-2)	LENGTH OF WHIP
6	ED3 - 000P1000	STANDARD STARTING CONNECTOR (BROWN PIGTAIL)	CHECKOUT(3); PROMOT(2); CORE	16	35'
6	ED410 - 000P1000	ISOLATED GROUND STARTING CONNECTOR (GREEN PIGTAIL)	CHECKOUT(3); UNICRU / ATM	14	35'
2	624P0000	3P WHIP DET (200/20V 1 1BY (BROWN PIGTAIL)	FREIZERS(3) AND COOLERS(3)	13.4	35'
6	624P0001	FOR SINGLE PHASE WHIP ED3-35FT (REQ'D AS 3RD WHIP)	FREIZERS(3) AND COOLERS(3)	13.4	35'

NOTE: CONFIRM EXACT LOCATION OF ALL J-BOXES WITH FDS PROJECT MANAGER PRIOR TO INSTALLATION. MOUNT ALL J-BOXES AT 1'-0" AFF.
 CONTACT DHP CUSTOM LIGHTS AT (800) 291-2200, ATTN: TAMMY FOR WHIPS WITH PIGTAILS FOR CONNECTION TO J-BOXES ABOVE CEILING.
 PROVIDE WHIPS FOR ALL PIGTAIL LOCATIONS (SEE SCHEDULE)

NOTE: SEE SHEET A-3 FOR RESTROOM PLUMBING AND ELECTRICAL INFORMATION.



NOTE: FAMILY DOLLAR PREFERS ALL ELECTRIC HVAC UNITS (NOT GAS) IN CLIMATE ZONES 1A, 2A & 3A.

March 24, 2003

ARCHITECT'S PROJECT # 11-001

Project:
FAMILY DOLLAR STORE
 9180, 8320, OR 8000 SF PROTOTYPES
CITY, STATE
PLAN # 2011-01
NOT FOR CONSTRUCTION

Sheet Description:
MEP
SCHEDULES, NOTES
AND DETAILS

THIS SET OF PROTOTYPE DRAWINGS IS FOR REFERENCE ONLY. THIS SET MAY BE PART OF A LEASE PACKAGE OR GENERAL REVIEW BY POTENTIAL BUILDERS OF A FAMILY DOLLAR STORE. IT IS THE DEVELOPER/ LANDLORD/ G.C.'S RESPONSIBILITY THAT WHOEVER IS SEALING THESE DOCUMENTS FOR PERMIT USE HAS COMPLIED WITH FEDERAL/ STATE AND LOCAL CODES AND ORDINANCES, AND REVISED THESE DOCUMENTS ACCORDINGLY FOR THE SITE SPECIFIC STORE. THESE DRAWINGS ARE NOT TO BE SUBMITTED FOR PLAN REVIEW OR PERMITTING.

Drawn By:
 C. THOMASON

Checked By:
 C. THOMASON

Revisions:

(Future Seal)
 THIS DRAWING AND ITS COPIES ARE THE COPYRIGHT OF THE ARCHITECT. THEY MAY NOT BE USED FOR PROJECTS OTHER THAN THE DESIGNATED PROJECT WITHOUT THE SPECIFIC WRITTEN APPROVAL OF C. L. HELT ARCHITECT INC. AND OR CHET L. HELT, ARCHITECT

Date:
 01-01-11

Sheet No.:
 M-1
 of 2